

Math in English



Skills VIII Exercise Book

Topics:

Fractions: operations

Mixed numbers

Division and multiplication of fractions

Conversion of fractions into percents

Percentages of numbers



This workbook is made for grade 5 and 6 students or for those who need remedial practice or more challenging materials.

This workbook covers:

- Adding and subtracting fractions with denominators that are not multiples of each other
- Division and Mixed Numbers
- Division of fractions
- Multiplication of fractions by whole numbers
- Multiplication of fractions by fractions
- Division of fractions by fractions
- Converting fractions into percents
- Percents of numbers

This booklet is excellent practice material for students of any ability level. It can be used as remedial learning and teaching material or as math content for those who need to be challenged more.

Addition and Subtraction of fractions

Calculate and show your answers in the lowest terms

$$\frac{1}{6} + \frac{1}{4} =$$

$$\frac{1}{3} + \frac{1}{2} =$$

$$\frac{2}{4} + \frac{1}{3} =$$

$$\frac{1}{5} + \frac{1}{6} =$$

$$\frac{1}{6} + \frac{1}{10} =$$

$$\frac{1}{3} + \frac{2}{10} =$$

$$\frac{2}{3} + \frac{1}{5} =$$

$$\frac{1}{2} + \frac{1}{9} =$$

$$\frac{1}{3} + \frac{4}{10} =$$

$$\frac{1}{3} + \frac{4}{8} =$$

$$\frac{1}{2} + \frac{1}{5} =$$

$$\frac{1}{4} + \frac{5}{10} =$$

$$\frac{3}{6} + \frac{2}{10} =$$

$$\frac{1}{3} + \frac{1}{8} =$$

$$\frac{1}{2} + \frac{2}{7} =$$

$$\frac{3}{5} + \frac{1}{6} =$$

$$\frac{3}{6} + \frac{1}{15} =$$

$$\frac{3}{8} + \frac{3}{6} =$$

$$\frac{2}{7} + \frac{2}{4} =$$

$$\frac{1}{4} + \frac{2}{3} =$$

$$\frac{1}{8} + \frac{3}{7} =$$

$$\frac{2}{10} + \frac{4}{15} =$$

$$\frac{4}{7} + \frac{0}{9} =$$

$$\frac{1}{6} + \frac{1}{9} =$$

$$\frac{3}{10} + \frac{1}{4} =$$

$$\frac{5}{6} + \frac{1}{8} =$$

$$\frac{1}{5} + \frac{3}{20} =$$



Addition and Subtraction of fractions

Calculate and show your answers in the lowest terms

$$\frac{2}{6} + \frac{1}{4} =$$

$$\frac{1}{3} + \frac{1}{7} =$$

$$\frac{1}{4} + \frac{1}{2} =$$

$$\frac{1}{5} + \frac{1}{3} =$$

$$\frac{3}{6} + \frac{1}{10} =$$

$$\frac{1}{3} + \frac{2}{12} =$$

$$\frac{2}{7} + \frac{1}{5} =$$

$$\frac{1}{2} + \frac{1}{7} =$$

$$\frac{1}{3} + \frac{4}{10} =$$

$$\frac{1}{3} + \frac{3}{6} =$$

$$\frac{1}{2} + \frac{1}{6} =$$

$$\frac{1}{3} + \frac{5}{14} =$$

$$\frac{2}{6} + \frac{2}{10} =$$

$$\frac{1}{5} + \frac{1}{8} =$$

$$\frac{1}{2} + \frac{2}{5} =$$

$$\frac{1}{5} + \frac{1}{6} =$$

$$\frac{3}{6} + \frac{1}{14} =$$

$$\frac{3}{8} + \frac{3}{7} =$$

$$\frac{4}{7} + \frac{1}{4} =$$

$$\frac{1}{5} + \frac{2}{4} =$$

$$\frac{1}{5} + \frac{3}{7} =$$

$$\frac{1}{10} + \frac{4}{15} =$$

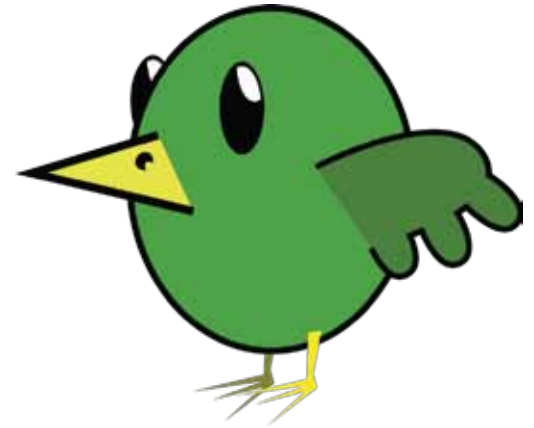
$$\frac{3}{8} + \frac{0}{9} =$$

$$\frac{1}{4} + \frac{1}{9} =$$

$$\frac{3}{10} + \frac{1}{4} =$$

$$\frac{5}{6} + \frac{1}{8} =$$

$$\frac{1}{5} + \frac{3}{20} =$$



Addition and Subtraction of fractions

Calculate and show your answers in the lowest terms

$$\frac{1}{4} - \frac{1}{6} =$$

$$\frac{1}{2} - \frac{1}{3} =$$

$$\frac{2}{4} - \frac{1}{3} =$$

$$\frac{1}{5} - \frac{1}{6} =$$

$$\frac{1}{6} - \frac{1}{10} =$$

$$\frac{1}{3} - \frac{2}{10} =$$

$$\frac{2}{3} - \frac{1}{5} =$$

$$\frac{1}{2} - \frac{1}{9} =$$

$$\frac{2}{3} - \frac{4}{10} =$$

$$\frac{2}{3} - \frac{4}{8} =$$

$$\frac{1}{2} - \frac{1}{5} =$$

$$\frac{3}{4} - \frac{5}{10} =$$

$$\frac{3}{6} - \frac{2}{10} =$$

$$\frac{1}{3} - \frac{1}{8} =$$

$$\frac{1}{2} - \frac{2}{7} =$$

$$\frac{3}{5} - \frac{1}{6} =$$

$$\frac{3}{6} - \frac{1}{15} =$$

$$\frac{3}{8} - \frac{2}{6} =$$

$$\frac{4}{7} - \frac{2}{4} =$$

$$\frac{3}{4} - \frac{2}{3} =$$

$$\frac{4}{8} - \frac{3}{7} =$$

$$\frac{4}{10} - \frac{4}{15} =$$

$$\frac{4}{7} - \frac{0}{9} =$$

$$\frac{1}{6} - \frac{1}{9} =$$

$$\frac{3}{10} - \frac{1}{4} =$$

$$\frac{5}{6} - \frac{1}{8} =$$

$$\frac{1}{5} - \frac{3}{20} =$$



Addition and Subtraction of fractions

Calculate and show your answers in the lowest terms

$$\frac{2}{4} - \frac{1}{6} =$$

$$\frac{1}{2} - \frac{1}{4} =$$

$$\frac{3}{4} - \frac{1}{3} =$$

$$\frac{2}{5} - \frac{1}{6} =$$

$$\frac{2}{6} - \frac{1}{10} =$$

$$\frac{2}{3} - \frac{2}{10} =$$



$$\frac{1}{3} - \frac{1}{5} =$$

$$\frac{1}{2} - \frac{1}{8} =$$

$$\frac{1}{3} - \frac{1}{10} =$$

$$\frac{2}{3} - \frac{1}{8} =$$

$$\frac{1}{2} - \frac{1}{3} =$$

$$\frac{3}{4} - \frac{1}{10} =$$

$$\frac{2}{6} - \frac{2}{10} =$$

$$\frac{1}{3} - \frac{1}{7} =$$

$$\frac{1}{2} - \frac{1}{7} =$$

$$\frac{2}{5} - \frac{1}{6} =$$

$$\frac{4}{6} - \frac{1}{15} =$$

$$\frac{5}{8} - \frac{2}{6} =$$

$$\frac{2}{7} - \frac{1}{4} =$$

$$\frac{2}{4} - \frac{2}{8} =$$

$$\frac{4}{7} - \frac{3}{8} =$$

$$\frac{5}{10} - \frac{4}{15} =$$

$$\frac{6}{9} - \frac{0}{9} =$$

$$\frac{2}{6} - \frac{1}{9} =$$

$$\frac{4}{10} - \frac{1}{4} =$$

$$\frac{4}{6} - \frac{1}{8} =$$

$$\frac{2}{5} - \frac{3}{20} =$$

Addition of Mixed Numbers

Calculate and show your answers in the lowest terms

$$2\frac{1}{2} + 1\frac{3}{5} =$$

$$3\frac{3}{4} + 2\frac{1}{7} =$$

$$1\frac{3}{4} + 1\frac{4}{6} =$$

$$4\frac{4}{5} + 1\frac{1}{3} =$$

$$5\frac{3}{7} + 1\frac{1}{6} =$$

$$1\frac{1}{8} + 1\frac{2}{9} =$$

$$3\frac{1}{8} + 1\frac{2}{6} =$$

$$5\frac{1}{9} + 1\frac{1}{6} =$$

$$3\frac{2}{4} + 2\frac{6}{9} =$$

$$3\frac{4}{5} + 2\frac{1}{6} =$$

$$3\frac{1}{4} + 1\frac{5}{6} =$$

$$2\frac{1}{4} + 6\frac{5}{6} =$$

$$4\frac{2}{4} + 1\frac{1}{6} =$$

$$1\frac{3}{4} + 4\frac{2}{6} =$$

$$7\frac{1}{4} + 1\frac{6}{7} =$$

$$4\frac{2}{3} + 1\frac{1}{2} =$$

$$4\frac{1}{3} + 4\frac{5}{6} =$$

$$2\frac{7}{8} + 4\frac{1}{6} =$$

$$2\frac{1}{3} + 3\frac{3}{4} =$$

$$3\frac{2}{4} + 2\frac{5}{6} =$$

$$3\frac{1}{5} + 2\frac{1}{2} =$$

$$2\frac{1}{2} + 2\frac{4}{6} =$$

$$1\frac{1}{8} + 1\frac{8}{9} =$$

$$5\frac{3}{4} + 1\frac{2}{6} =$$



Divide and express your answers in mixed numbers

$5 \div 4 =$

$10 \div 4 =$

$8 \div 5 =$

$12 \div 5 =$

$7 \div 3 =$

$7 \div 5 =$

$6 \div 4 =$

$11 \div 6 =$

$10 \div 7 =$

$3 \div 2 =$

$13 \div 4 =$

$22 \div 9 =$

$15 \div 4 =$

$7 \div 2 =$

$43 \div 9 =$

$23 \div 5 =$

$9 \div 4 =$

$15 \div 8 =$

$12 \div 7 =$

$17 \div 4 =$

$21 \div 6 =$

$35 \div 8 =$

$13 \div 2 =$

$11 \div 5 =$



Division and Mixed Numbers

Divide and express your answers in mixed numbers

$5 \div 3 =$

$13 \div 4 =$

$6 \div 5 =$

$16 \div 5 =$

$7 \div 6 =$

$9 \div 5 =$

$9 \div 4 =$

$13 \div 6 =$

$10 \div 7 =$

$7 \div 2 =$

$17 \div 4 =$

$19 \div 9 =$

$11 \div 4 =$

$9 \div 2 =$

$46 \div 9 =$

$21 \div 5 =$

$6 \div 4 =$

$13 \div 8 =$

$16 \div 7 =$

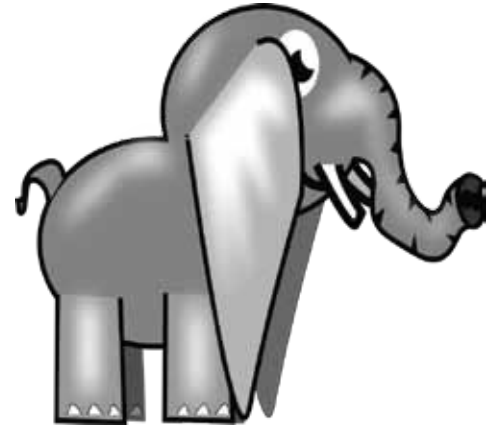
$19 \div 4 =$

$20 \div 6 =$

$31 \div 8 =$

$11 \div 2 =$

$12 \div 5 =$



Divide and express your answers in mixed numbers

$5 \div 2 = 2$

$10 \div 9 =$

$8 \div 7 = 1$

$12 \div 7 =$

$7 \div 6 = 1$

$7 \div 3 =$

$9 \div 4 = 2$

$17 \div 6 =$

$10 \div 8 =$

$7 \div 4 = 1$

$19 \div 4 =$

$22 \div 7 =$

$18 \div 4 = 2$

$7 \div 5 =$

$41 \div 9 =$

$23 \div 9 = 2$

$9 \div 8 =$

$13 \div 8 =$

$12 \div 9 = 1$

$17 \div 8 =$

$21 \div 6 =$

$35 \div 9 = 3$

$13 \div 8 =$

$17 \div 5 =$



Divide and express your answers in the lowest possible terms

$$\frac{1}{4} \div 4 =$$

$$\frac{4}{6} \div 3 =$$

$$\frac{2}{3} \div 5 =$$

$$\frac{1}{2} \div 4 =$$

$$\frac{3}{3} \div 6 =$$

$$\frac{2}{9} \div 3 =$$

$$\frac{1}{9} \div 7 =$$

$$\frac{1}{5} \div 4 =$$

$$\frac{3}{5} \div 8 =$$

$$\frac{5}{6} \div 6 =$$

$$\frac{1}{3} \div 3 =$$

$$\frac{1}{7} \div 6 =$$

$$\frac{1}{6} \div 8 =$$

$$\frac{1}{5} \div 2 =$$

$$\frac{1}{3} \div 2 =$$

$$\frac{4}{9} \div 4 =$$

$$\frac{5}{8} \div 9 =$$

$$\frac{9}{2} \div 5 =$$

$$\frac{3}{5} \div 2 =$$

$$\frac{2}{3} \div 6 =$$

$$\frac{4}{5} \div 4 =$$

$$\frac{3}{4} \div 4 =$$

$$\frac{6}{7} \div 2 =$$

$$\frac{1}{9} \div 3 =$$

$$\frac{5}{3} \div 3 =$$



Divide and express your answers in the lowest possible terms

$$\frac{1}{3} \div 4 =$$

$$\frac{4}{5} \div 3 =$$

$$\frac{2}{4} \div 5 =$$

$$\frac{1}{3} \div 4 =$$

$$\frac{3}{3} \div 4 =$$

$$\frac{2}{7} \div 4 =$$



$$\frac{1}{8} \div 7 =$$

$$\frac{1}{5} \div 5 =$$

$$\frac{2}{6} \div 8 =$$

$$\frac{5}{6} \div 5 =$$

$$\frac{1}{2} \div 3 =$$

$$\frac{2}{7} \div 5 =$$

$$\frac{1}{6} \div 8 =$$

$$\frac{1}{5} \div 3 =$$

$$\frac{1}{5} \div 9 =$$

$$\frac{4}{9} \div 3 =$$

$$\frac{3}{8} \div 9 =$$

$$\frac{3}{2} \div 4 =$$

$$\frac{4}{5} \div 2 =$$

$$\frac{1}{3} \div 6 =$$

$$\frac{4}{5} \div 3 =$$

$$\frac{3}{4} \div 4 =$$

$$\frac{2}{7} \div 2 =$$

$$\frac{1}{9} \div 8 =$$

$$\frac{5}{4} \div 4 =$$

Multiply and express your answers in mixed numbers



$$\frac{1}{3} \times 4 =$$

$$\frac{2}{5} \times 8 =$$

$$\frac{2}{4} \times 5 =$$

$$\frac{2}{7} \times 9 =$$

$$\frac{1}{7} \times 9 =$$

$$\frac{1}{3} \times 7 =$$

$$\frac{1}{2} \times 9 =$$

$$\frac{2}{5} \times 4 =$$

$$\frac{1}{4} \times 5 =$$

$$\frac{1}{3} \times 8 =$$

$$\frac{4}{3} \times 4 =$$

$$\frac{1}{2} \times 5 =$$

$$\frac{1}{3} \times 5 =$$

$$\frac{2}{3} \times 11 =$$

$$\frac{1}{6} \times 8 =$$

$$\frac{5}{3} \times 4 =$$

$$\frac{1}{5} \times 9 =$$

$$\frac{1}{7} \times 9 =$$

$$\frac{3}{8} \times 4 =$$

$$\frac{2}{7} \times 4 =$$

$$\frac{1}{6} \times 9 =$$

$$\frac{1}{5} \times 24 =$$

$$\frac{1}{4} \times 39 =$$

$$\frac{6}{7} \times 4 =$$

$$\frac{4}{5} \times 4 =$$

Multiply and express your answers in mixed numbers



$$\frac{1}{3} \times 5 =$$

$$\frac{2}{4} \times 7 =$$

$$\frac{2}{3} \times 5 =$$

$$\frac{2}{6} \times 7 =$$

$$\frac{1}{5} \times 9 =$$

$$\frac{1}{6} \times 7 =$$

$$\frac{1}{2} \times 8 =$$

$$\frac{2}{3} \times 4 =$$

$$\frac{1}{4} \times 6 =$$

$$\frac{1}{3} \times 7 =$$

$$\frac{5}{3} \times 4 =$$

$$\frac{1}{2} \times 7 =$$

$$\frac{2}{3} \times 5 =$$

$$\frac{2}{3} \times 10 =$$

$$\frac{1}{6} \times 9 =$$

$$\frac{5}{3} \times 3 =$$

$$\frac{1}{5} \times 8 =$$

$$\frac{1}{6} \times 9 =$$

$$\frac{3}{8} \times 4 =$$

$$\frac{2}{7} \times 5 =$$

$$\frac{2}{6} \times 9 =$$

$$\frac{1}{6} \times 24 =$$

$$\frac{1}{4} \times 31 =$$

$$\frac{4}{7} \times 4 =$$

$$\frac{3}{5} \times 4 =$$

Multiply and express your answers in the lowest terms

$$\frac{1}{3} \times \frac{1}{3} =$$

$$\frac{1}{2} \times \frac{1}{3} =$$

$$\frac{2}{4} \times \frac{2}{4} =$$

$$\frac{2}{9} \times \frac{3}{7} =$$

$$\frac{3}{7} \times \frac{1}{6} =$$

$$\frac{1}{7} \times \frac{6}{7} =$$

$$\frac{1}{2} \times \frac{1}{2} =$$

$$\frac{1}{5} \times \frac{4}{6} =$$

$$\frac{2}{7} \times \frac{2}{7} =$$

$$\frac{1}{5} \times \frac{4}{2} =$$

$$\frac{4}{3} \times \frac{2}{3} =$$

$$\frac{4}{3} \times \frac{1}{3} =$$

$$\frac{2}{3} \times \frac{2}{3} =$$

$$\frac{1}{3} \times \frac{2}{6} =$$

$$\frac{1}{3} \times \frac{2}{8} =$$

$$\frac{1}{3} \times \frac{5}{6} =$$

$$\frac{1}{7} \times \frac{3}{5} =$$

$$\frac{3}{5} \times \frac{3}{4} =$$

$$\frac{2}{7} \times \frac{5}{7} =$$

$$\frac{5}{6} \times \frac{2}{3} =$$

$$\frac{2}{6} \times \frac{2}{3} =$$

$$\frac{1}{4} \times \frac{3}{5} =$$

$$\frac{2}{3} \times \frac{1}{3} =$$

$$\frac{1}{4} \times \frac{6}{8} =$$



Multiplying Fractions

Multiply and express your answers in the lowest terms

$$\frac{1}{4} \times \frac{1}{3} =$$

$$\frac{1}{8} \times \frac{1}{3} =$$

$$\frac{2}{5} \times \frac{2}{4} =$$

$$\frac{2}{5} \times \frac{3}{7} =$$

$$\frac{3}{4} \times \frac{1}{4} =$$

$$\frac{2}{7} \times \frac{6}{6} =$$

$$\frac{1}{3} \times \frac{1}{2} =$$

$$\frac{1}{8} \times \frac{4}{6} =$$

$$\frac{1}{7} \times \frac{2}{7} =$$

$$\frac{1}{9} \times \frac{4}{2} =$$

$$\frac{4}{7} \times \frac{2}{3} =$$

$$\frac{4}{3} \times \frac{1}{3} =$$

$$\frac{2}{5} \times \frac{2}{3} =$$

$$\frac{1}{7} \times \frac{2}{6} =$$

$$\frac{1}{3} \times \frac{3}{8} =$$

$$\frac{1}{4} \times \frac{5}{6} =$$

$$\frac{1}{4} \times \frac{3}{5} =$$

$$\frac{2}{5} \times \frac{3}{4} =$$

$$\frac{2}{6} \times \frac{5}{7} =$$

$$\frac{5}{6} \times \frac{2}{3} =$$

$$\frac{1}{6} \times \frac{2}{3} =$$

$$\frac{1}{3} \times \frac{3}{5} =$$

$$\frac{2}{3} \times \frac{2}{3} =$$

$$\frac{3}{4} \times \frac{6}{8} =$$



Dividing Fractions

Divide and express your answers in mixed numbers and the lowest terms

$$\frac{1}{3} \div \frac{1}{4} =$$

$$\frac{1}{2} \div \frac{1}{3} =$$

$$\frac{2}{4} \div \frac{1}{5} =$$

$$\frac{2}{9} \div \frac{3}{7} =$$

$$\frac{3}{7} \div \frac{1}{6} =$$

$$\frac{6}{7} \div \frac{1}{4} =$$

$$\frac{1}{2} \div \frac{1}{7} =$$

$$\frac{1}{5} \div \frac{1}{6} =$$

$$\frac{5}{7} \div \frac{1}{9} =$$

$$\frac{4}{5} \div \frac{1}{2} =$$

$$\frac{4}{5} \div \frac{1}{3} =$$

$$\frac{1}{2} \div \frac{1}{9} =$$

$$\frac{2}{7} \div \frac{2}{8} =$$

$$\frac{1}{3} \div \frac{1}{7} =$$

$$\frac{1}{3} \div \frac{1}{8} =$$

$$\frac{2}{3} \div \frac{2}{5} =$$

$$\frac{5}{7} \div \frac{1}{5} =$$

$$\frac{3}{5} \div \frac{1}{4} =$$

$$\frac{5}{7} \div \frac{2}{7} =$$

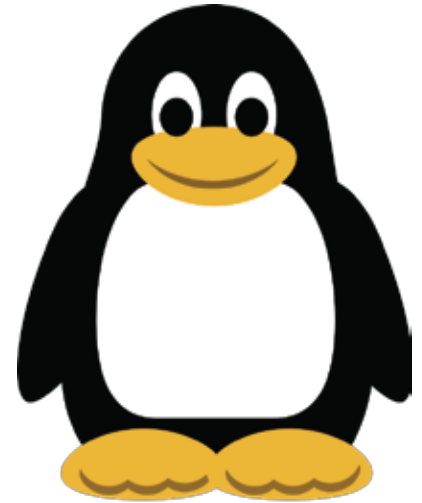
$$\frac{2}{6} \div \frac{2}{3} =$$

$$\frac{2}{6} \div \frac{1}{8} =$$

$$\frac{3}{4} \div \frac{3}{5} =$$

$$\frac{2}{3} \div \frac{1}{7} =$$

$$\frac{1}{4} \div \frac{1}{9} =$$



Dividing Fractions

Divide and express your answers in mixed numbers and the lowest terms

$$\frac{1}{5} \div \frac{1}{4} =$$

$$\frac{1}{3} \div \frac{1}{3} =$$

$$\frac{1}{4} \div \frac{1}{5} =$$

$$\frac{1}{9} \div \frac{3}{7} =$$

$$\frac{2}{7} \div \frac{1}{6} =$$

$$\frac{6}{8} \div \frac{1}{4} =$$

$$\frac{1}{3} \div \frac{1}{7} =$$

$$\frac{1}{4} \div \frac{4}{6} =$$

$$\frac{5}{7} \div \frac{1}{9} =$$

$$\frac{3}{5} \div \frac{1}{2} =$$

$$\frac{4}{6} \div \frac{1}{3} =$$

$$\frac{1}{7} \div \frac{1}{9} =$$

$$\frac{1}{7} \div \frac{2}{8} =$$

$$\frac{1}{2} \div \frac{1}{7} =$$

$$\frac{1}{4} \div \frac{1}{8} =$$

$$\frac{1}{3} \div \frac{2}{5} =$$

$$\frac{1}{7} \div \frac{1}{5} =$$

$$\frac{3}{5} \div \frac{1}{4} =$$

$$\frac{1}{7} \div \frac{2}{7} =$$

$$\frac{2}{9} \div \frac{2}{3} =$$

$$\frac{2}{6} \div \frac{1}{8} =$$

$$\frac{2}{4} \div \frac{3}{5} =$$

$$\frac{2}{5} \div \frac{1}{7} =$$

$$\frac{1}{3} \div \frac{1}{9} =$$



Convert the following fractions into percents (round off to the nearest hundredth)

$$\frac{1}{3} = \underline{\hspace{2cm}} \%$$

$$\frac{4}{6} = \underline{\hspace{2cm}} \%$$

$$\frac{1}{6} = \underline{\hspace{2cm}} \%$$

$$\frac{2}{7} = \underline{\hspace{2cm}} \%$$

$$\frac{2}{3} = \underline{\hspace{2cm}} \%$$

$$\frac{1}{9} = \underline{\hspace{2cm}} \%$$

$$\frac{3}{7} = \underline{\hspace{2cm}} \%$$

$$\frac{1}{8} = \underline{\hspace{2cm}} \%$$

$$\frac{1}{11} = \underline{\hspace{2cm}} \%$$

$$\frac{2}{13} = \underline{\hspace{2cm}} \%$$

$$\frac{3}{14} = \underline{\hspace{2cm}} \%$$

$$\frac{5}{9} = \underline{\hspace{2cm}} \%$$

$$\frac{1}{3} = \underline{\hspace{2cm}} \%$$

$$\frac{1}{7} = \underline{\hspace{2cm}} \%$$

$$\frac{6}{8} = \underline{\hspace{2cm}} \%$$

$$\frac{1}{2} = \underline{\hspace{2cm}} \%$$

$$\frac{4}{3} = \underline{\hspace{2cm}} \%$$

$$\frac{6}{7} = \underline{\hspace{2cm}} \%$$

$$\frac{4}{5} = \underline{\hspace{2cm}} \%$$

$$\frac{2}{6} = \underline{\hspace{2cm}} \%$$

$$\frac{9}{9} = \underline{\hspace{2cm}} \%$$

$$\frac{8}{7} = \underline{\hspace{2cm}} \%$$

$$\frac{5}{8} = \underline{\hspace{2cm}} \%$$

$$\frac{9}{3} = \underline{\hspace{2cm}} \%$$

$$\frac{8}{2} = \underline{\hspace{2cm}} \%$$

$$\frac{3}{17} = \underline{\hspace{2cm}} \%$$

$$\frac{1}{25} = \underline{\hspace{2cm}} \%$$

$$\frac{1}{50} = \underline{\hspace{2cm}} \%$$

$$\frac{1}{75} = \underline{\hspace{2cm}} \%$$



Convert the following fractions into percents (round off to the nearest hundredth)

$$\frac{3}{7} = \underline{\hspace{2cm}} \%$$

$$\frac{4}{3} = \underline{\hspace{2cm}} \%$$

$$\frac{1}{8} = \underline{\hspace{2cm}} \%$$

$$\frac{2}{11} = \underline{\hspace{2cm}} \%$$

$$\frac{2}{9} = \underline{\hspace{2cm}} \%$$

$$\frac{1}{3} = \underline{\hspace{2cm}} \%$$

$$\frac{3}{6} = \underline{\hspace{2cm}} \%$$

$$\frac{1}{7} = \underline{\hspace{2cm}} \%$$

$$\frac{1}{13} = \underline{\hspace{2cm}} \%$$

$$\frac{2}{15} = \underline{\hspace{2cm}} \%$$

$$\frac{3}{19} = \underline{\hspace{2cm}} \%$$

$$\frac{5}{8} = \underline{\hspace{2cm}} \%$$

$$\frac{7}{2} = \underline{\hspace{2cm}} \%$$

$$\frac{7}{7} = \underline{\hspace{2cm}} \%$$

$$\frac{6}{7} = \underline{\hspace{2cm}} \%$$

$$\frac{6}{2} = \underline{\hspace{2cm}} \%$$

$$\frac{4}{9} = \underline{\hspace{2cm}} \%$$

$$\frac{6}{4} = 150 \%$$

$$\frac{7}{3} = \underline{\hspace{2cm}} \%$$

$$\frac{4}{5} = \underline{\hspace{2cm}} \%$$

$$\frac{5}{9} = \underline{\hspace{2cm}} \%$$

$$\frac{3}{7} = \underline{\hspace{2cm}} \%$$

$$\frac{3}{8} = \underline{\hspace{2cm}} \%$$

$$\frac{2}{3} = \underline{\hspace{2cm}} \%$$

$$\frac{5}{2} = \underline{\hspace{2cm}} \%$$

$$\frac{4}{17} = \underline{\hspace{2cm}} \%$$

$$\frac{9}{25} = \underline{\hspace{2cm}} \%$$

$$\frac{3}{50} = \underline{\hspace{2cm}} \%$$

$$\frac{9}{75} = \underline{\hspace{2cm}} \%$$



Calculate the following percentages

$75\% \text{ of } 150 =$

$30\% \text{ of } 180 =$

$25\% \text{ of } 170 =$

$20\% \text{ of } 160 =$

$15\% \text{ of } 150 =$

$50\% \text{ of } 145 =$

$45\% \text{ of } 200 =$

$10\% \text{ of } 198 =$

$60\% \text{ of } 450 =$

$40\% \text{ of } 325 =$

$60\% \text{ of } 400 =$

$73\% \text{ of } 250 =$

$25\% \text{ of } 190 =$

$65\% \text{ of } 150 =$

$50\% \text{ of } 153 =$

$50\% \text{ of } 110 =$

$95\% \text{ of } 160 =$

$75\% \text{ of } 500 =$

$65\% \text{ of } 320 =$

$35\% \text{ of } 170 =$

$88\% \text{ of } 150 =$

$40\% \text{ of } 100 =$

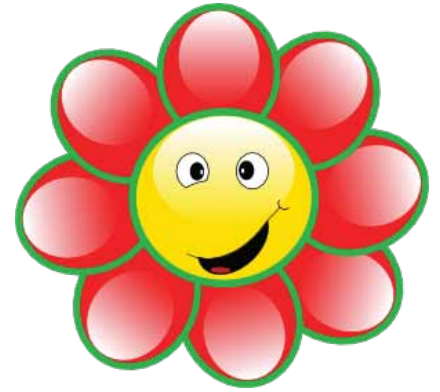
$33\% \text{ of } 150 =$

$75\% \text{ of } 270 =$

$90\% \text{ of } 250 =$

$47\% \text{ of } 250 =$

$23\% \text{ of } 200 =$



Calculate the following percentages

$25\% \text{ of } 150 =$

$40\% \text{ of } 180 =$

$15\% \text{ of } 170 =$

$10\% \text{ of } 160 =$

$35\% \text{ of } 150 =$

$60\% \text{ of } 145 =$

$42\% \text{ of } 200 =$

$50\% \text{ of } 198 =$

$61\% \text{ of } 450 =$

$48\% \text{ of } 325 =$

$90\% \text{ of } 400 =$

$72\% \text{ of } 250 =$

$65\% \text{ of } 190 =$

$75\% \text{ of } 150 =$

$60\% \text{ of } 153 =$

$80\% \text{ of } 110 =$

$95\% \text{ of } 160 =$

$15\% \text{ of } 500 =$

$15\% \text{ of } 320 =$

$75\% \text{ of } 170 =$

$18\% \text{ of } 150 =$

$30\% \text{ of } 100 =$

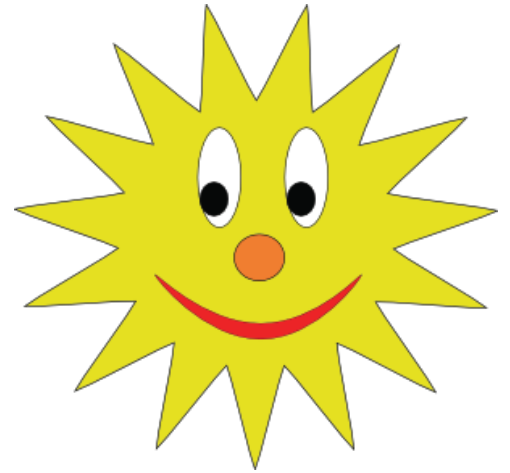
$37\% \text{ of } 150 =$

$25\% \text{ of } 270 =$

$92\% \text{ of } 250 =$

$49\% \text{ of } 250 =$

$33\% \text{ of } 200 =$



Calculate and show your answers in the lowest terms

$$\frac{1}{6} + \frac{1}{4} = \frac{5}{12}$$

$$\frac{1}{3} + \frac{1}{2} = \frac{5}{6}$$



$$\frac{2}{4} + \frac{1}{3} = \frac{5}{6}$$

$$\frac{1}{5} + \frac{1}{6} = \frac{11}{30}$$

$$\frac{1}{6} + \frac{1}{10} = \frac{4}{15}$$

$$\frac{1}{3} + \frac{2}{10} = \frac{8}{15}$$

$$\frac{2}{3} + \frac{1}{5} = \frac{13}{15}$$

$$\frac{1}{2} + \frac{1}{9} = \frac{11}{18}$$

$$\frac{1}{3} + \frac{4}{10} = \frac{11}{15}$$

$$\frac{1}{3} + \frac{4}{8} = \frac{5}{6}$$

$$\frac{1}{2} + \frac{1}{5} = \frac{7}{10}$$

$$\frac{1}{4} + \frac{5}{10} = \frac{3}{4}$$

$$\frac{3}{6} + \frac{2}{10} = \frac{7}{10}$$

$$\frac{1}{3} + \frac{1}{8} = \frac{11}{24}$$

$$\frac{1}{2} + \frac{2}{7} = \frac{11}{14}$$

$$\frac{3}{5} + \frac{1}{6} = \frac{23}{30}$$

$$\frac{3}{6} + \frac{1}{15} = \frac{17}{30}$$

$$\frac{3}{8} + \frac{3}{6} = \frac{7}{8}$$

$$\frac{2}{7} + \frac{2}{4} = \frac{11}{14}$$

$$\frac{1}{4} + \frac{2}{3} = \frac{11}{12}$$

$$\frac{1}{8} + \frac{3}{7} = \frac{31}{56}$$

$$\frac{2}{10} + \frac{4}{15} = \frac{7}{15}$$

$$\frac{4}{7} + \frac{0}{9} = \frac{4}{7}$$

$$\frac{1}{6} + \frac{1}{9} = \frac{5}{18}$$

$$\frac{3}{10} + \frac{1}{4} = \frac{11}{20}$$

$$\frac{5}{6} + \frac{1}{8} = \frac{23}{24}$$

$$\frac{1}{5} + \frac{3}{20} = \frac{7}{20}$$

Calculate and show your answers in the lowest terms

$$\frac{2}{6} + \frac{1}{4} = \frac{7}{12}$$

$$\frac{1}{3} + \frac{1}{7} = \frac{10}{21}$$



$$\frac{1}{4} + \frac{1}{2} = \frac{3}{4}$$

$$\frac{1}{5} + \frac{1}{3} = \frac{8}{15}$$

$$\frac{3}{6} + \frac{1}{10} = \frac{6}{10}$$

$$\frac{1}{3} + \frac{2}{12} = \frac{1}{2}$$

$$\frac{2}{7} + \frac{1}{5} = \frac{17}{35}$$

$$\frac{1}{2} + \frac{1}{7} = \frac{9}{14}$$

$$\frac{1}{3} + \frac{4}{10} = \frac{11}{15}$$

$$\frac{1}{3} + \frac{3}{6} = \frac{5}{6}$$

$$\frac{1}{2} + \frac{1}{6} = \frac{2}{3}$$

$$\frac{1}{3} + \frac{5}{14} = \frac{29}{42}$$

$$\frac{2}{6} + \frac{2}{10} = \frac{8}{15}$$

$$\frac{1}{5} + \frac{1}{8} = \frac{13}{40}$$

$$\frac{1}{2} + \frac{2}{5} = \frac{9}{10}$$

$$\frac{1}{5} + \frac{1}{6} = \frac{11}{30}$$

$$\frac{3}{6} + \frac{1}{14} = \frac{12}{21}$$

$$\frac{3}{8} + \frac{3}{7} = \frac{45}{56}$$

$$\frac{4}{7} + \frac{1}{4} = \frac{23}{28}$$

$$\frac{1}{5} + \frac{2}{4} = \frac{7}{10}$$

$$\frac{1}{5} + \frac{3}{7} = \frac{22}{35}$$

$$\frac{1}{10} + \frac{4}{15} = \frac{11}{30}$$

$$\frac{3}{8} + \frac{0}{9} = \frac{3}{8}$$

$$\frac{1}{4} + \frac{1}{9} = \frac{13}{36}$$

$$\frac{3}{10} + \frac{1}{4} = \frac{11}{20}$$

$$\frac{5}{6} + \frac{1}{8} = \frac{23}{24}$$

$$\frac{1}{5} + \frac{3}{20} = \frac{7}{20}$$

Calculate and show your answers in the lowest terms

$$\frac{1}{4} - \frac{1}{6} = \frac{1}{12}$$

$$\frac{1}{2} - \frac{1}{3} = \frac{1}{6}$$



$$\frac{2}{4} - \frac{1}{3} = \frac{1}{6}$$

$$\frac{1}{5} - \frac{1}{6} = \frac{1}{30}$$

$$\frac{1}{6} - \frac{1}{10} = \frac{1}{15}$$

$$\frac{1}{3} - \frac{2}{10} = \frac{2}{15}$$

$$\frac{2}{3} - \frac{1}{5} = \frac{7}{15}$$

$$\frac{1}{2} - \frac{1}{9} = \frac{7}{18}$$

$$\frac{2}{3} - \frac{4}{10} = \frac{4}{15}$$

$$\frac{2}{3} - \frac{4}{8} = \frac{1}{6}$$

$$\frac{1}{2} - \frac{1}{5} = \frac{3}{10}$$

$$\frac{3}{4} - \frac{5}{10} = \frac{1}{4}$$

$$\frac{3}{6} - \frac{2}{10} = \frac{3}{10}$$

$$\frac{1}{3} - \frac{1}{8} = \frac{5}{24}$$

$$\frac{1}{2} - \frac{2}{7} = \frac{3}{14}$$

$$\frac{3}{5} - \frac{1}{6} = \frac{13}{30}$$

$$\frac{3}{6} - \frac{1}{15} = \frac{13}{30}$$

$$\frac{3}{8} - \frac{2}{6} = \frac{1}{24}$$

$$\frac{4}{7} - \frac{2}{4} = \frac{1}{14}$$

$$\frac{3}{4} - \frac{2}{3} = \frac{1}{12}$$

$$\frac{4}{8} - \frac{3}{7} = \frac{1}{14}$$

$$\frac{4}{10} - \frac{4}{15} = \frac{2}{15}$$

$$\frac{4}{7} - \frac{0}{9} = \frac{4}{7}$$

$$\frac{1}{6} - \frac{1}{9} = \frac{1}{18}$$

$$\frac{3}{10} - \frac{1}{4} = \frac{1}{20}$$

$$\frac{5}{6} - \frac{1}{8} = \frac{17}{24}$$

$$\frac{1}{5} - \frac{3}{20} = \frac{1}{20}$$

Calculate and show your answers in the lowest terms

$$\frac{2}{4} - \frac{1}{6} = \frac{1}{3}$$

$$\frac{1}{2} - \frac{1}{4} = \frac{1}{4}$$



$$\frac{3}{4} - \frac{1}{3} = \frac{5}{12}$$

$$\frac{2}{5} - \frac{1}{6} = \frac{7}{30}$$

$$\frac{2}{6} - \frac{1}{10} = \frac{7}{30}$$

$$\frac{2}{3} - \frac{2}{10} = \frac{7}{15}$$

$$\frac{1}{3} - \frac{1}{5} = \frac{2}{15}$$

$$\frac{1}{2} - \frac{1}{8} = \frac{3}{8}$$

$$\frac{1}{3} - \frac{1}{10} = \frac{7}{30}$$

$$\frac{2}{3} - \frac{1}{8} = \frac{13}{24}$$

$$\frac{1}{2} - \frac{1}{3} = \frac{1}{6}$$

$$\frac{3}{4} - \frac{1}{10} = \frac{13}{20}$$

$$\frac{2}{6} - \frac{2}{10} = \frac{2}{15}$$

$$\frac{1}{3} - \frac{1}{7} = \frac{4}{21}$$

$$\frac{1}{2} - \frac{1}{7} = \frac{6}{14}$$

$$\frac{2}{5} - \frac{1}{6} = \frac{13}{30}$$

$$\frac{4}{6} - \frac{1}{15} = \frac{3}{5}$$

$$\frac{5}{8} - \frac{2}{6} = \frac{7}{24}$$

$$\frac{2}{7} - \frac{1}{4} = \frac{1}{14}$$

$$\frac{2}{4} - \frac{2}{8} = \frac{1}{4}$$

$$\frac{4}{7} - \frac{3}{8} = \frac{11}{56}$$

$$\frac{5}{10} - \frac{4}{15} = \frac{2}{15}$$

$$\frac{6}{9} - \frac{0}{9} = \frac{6}{9}$$

$$\frac{2}{6} - \frac{1}{9} = \frac{2}{9}$$

$$\frac{4}{10} - \frac{1}{4} = \frac{3}{20}$$

$$\frac{4}{6} - \frac{1}{8} = \frac{13}{24}$$

$$\frac{2}{5} - \frac{3}{20} = \frac{1}{4}$$

Calculate and show your answers in the lowest terms

$$2\frac{1}{2} + 1\frac{3}{5} = 4\frac{1}{10}$$

$$3\frac{3}{4} + 2\frac{1}{7} = 5\frac{25}{28}$$

$$1\frac{3}{4} + 1\frac{4}{6} = 3\frac{5}{12}$$

$$4\frac{4}{5} + 1\frac{1}{3} = 6\frac{2}{15}$$

$$5\frac{3}{7} + 1\frac{1}{6} = 6\frac{25}{42}$$

$$1\frac{1}{8} + 1\frac{2}{9} = 2\frac{25}{72}$$

$$3\frac{1}{8} + 1\frac{2}{6} = 4\frac{11}{24}$$

$$5\frac{1}{9} + 1\frac{1}{6} = 6\frac{5}{18}$$

$$3\frac{2}{4} + 2\frac{6}{9} = 6\frac{1}{6}$$

$$3\frac{4}{5} + 2\frac{1}{6} = 5\frac{29}{30}$$

$$3\frac{1}{4} + 1\frac{5}{6} = 5\frac{1}{12}$$

$$2\frac{1}{4} + 6\frac{5}{6} = 9\frac{1}{12}$$

$$4\frac{2}{4} + 1\frac{1}{6} = 5\frac{2}{3}$$

$$1\frac{3}{4} + 4\frac{2}{6} = 6\frac{1}{12}$$

$$7\frac{1}{4} + 1\frac{6}{7} = 9\frac{3}{28}$$

$$4\frac{2}{3} + 1\frac{1}{2} = 6\frac{1}{6}$$

$$4\frac{1}{3} + 4\frac{5}{6} = 9\frac{1}{6}$$

$$2\frac{7}{8} + 4\frac{1}{6} = 7\frac{1}{24}$$

$$2\frac{1}{3} + 3\frac{3}{4} = 6\frac{1}{12}$$

$$3\frac{2}{4} + 2\frac{5}{6} = 6\frac{1}{3}$$

$$3\frac{1}{5} + 2\frac{1}{2} = 5\frac{7}{10}$$

$$2\frac{1}{2} + 2\frac{4}{6} = 5\frac{1}{6}$$

$$1\frac{1}{8} + 1\frac{8}{9} = 3\frac{1}{72}$$

$$5\frac{3}{4} + 1\frac{2}{6} = 7\frac{1}{12}$$



Divide and express your answers in mixed numbers

$$5 \div 4 = 1\frac{1}{4}$$

$$10 \div 4 = 2\frac{1}{2}$$

$$8 \div 5 = 1\frac{3}{5}$$

$$12 \div 5 = 2\frac{2}{5}$$

$$7 \div 3 = 2\frac{1}{3}$$

$$7 \div 5 = 1\frac{2}{5}$$

$$6 \div 4 = 1\frac{1}{2}$$

$$11 \div 6 = 1\frac{5}{6}$$

$$10 \div 7 = 1\frac{3}{7}$$

$$3 \div 2 = 1\frac{1}{2}$$

$$13 \div 4 = 3\frac{1}{4}$$

$$22 \div 9 = 2\frac{4}{9}$$

$$15 \div 4 = 3\frac{3}{4}$$

$$7 \div 2 = 3\frac{1}{2}$$

$$43 \div 9 = 4\frac{7}{9}$$

$$23 \div 5 = 4\frac{3}{5}$$

$$9 \div 4 = 2\frac{1}{4}$$

$$15 \div 8 = 1\frac{7}{8}$$

$$12 \div 7 = 1\frac{5}{7}$$

$$17 \div 4 = 4\frac{1}{4}$$

$$21 \div 6 = 3\frac{1}{2}$$

$$35 \div 8 = 4\frac{3}{8}$$

$$13 \div 2 = 6\frac{1}{2}$$

$$11 \div 5 = 2\frac{1}{5}$$



Divide and express your answers in mixed numbers

$$5 \div 3 = 1\frac{2}{3}$$

$$13 \div 4 = 3\frac{1}{4}$$

$$6 \div 5 = 1\frac{1}{5}$$

$$16 \div 5 = 3\frac{1}{5}$$

$$7 \div 6 = 1\frac{1}{6}$$

$$9 \div 5 = 1\frac{4}{5}$$

$$9 \div 4 = 2\frac{1}{4}$$

$$13 \div 6 = 2\frac{1}{6}$$

$$10 \div 7 = 1\frac{3}{7}$$

$$7 \div 2 = 3\frac{1}{2}$$

$$17 \div 4 = 4\frac{1}{4}$$

$$19 \div 9 = 2\frac{1}{9}$$

$$11 \div 4 = 2\frac{3}{4}$$

$$9 \div 2 = 4\frac{1}{2}$$

$$46 \div 9 = 5\frac{1}{9}$$

$$21 \div 5 = 4\frac{1}{5}$$

$$6 \div 4 = 1\frac{1}{2}$$

$$13 \div 8 = 1\frac{5}{8}$$

$$16 \div 7 = 2\frac{2}{7}$$

$$19 \div 4 = 4\frac{3}{4}$$

$$20 \div 6 = 3\frac{1}{3}$$

$$31 \div 8 = 3\frac{7}{8}$$

$$11 \div 2 = 5\frac{1}{2}$$

$$12 \div 5 = 2\frac{2}{5}$$



Divide and express your answers in mixed numbers

$$5 \div 2 = 2\frac{1}{2}$$

$$10 \div 9 = 1\frac{1}{9}$$

$$8 \div 7 = 1\frac{1}{7}$$

$$12 \div 7 = 1\frac{5}{7}$$

$$7 \div 6 = 1\frac{1}{6}$$

$$7 \div 3 = 2\frac{1}{3}$$

$$9 \div 4 = 2\frac{1}{4}$$

$$17 \div 6 = 2\frac{5}{6}$$

$$10 \div 8 = 1\frac{1}{4}$$

$$7 \div 4 = 1\frac{3}{4}$$

$$19 \div 4 = 4\frac{3}{4}$$

$$22 \div 7 = 3\frac{1}{7}$$

$$18 \div 4 = 4\frac{1}{2}$$

$$7 \div 5 = 1\frac{2}{5}$$

$$41 \div 9 = 4\frac{5}{9}$$

$$23 \div 9 = 2\frac{5}{9}$$

$$9 \div 8 = 1\frac{1}{8}$$

$$13 \div 8 = 1\frac{5}{8}$$

$$12 \div 9 = 1\frac{1}{3}$$

$$17 \div 8 = 2\frac{1}{8}$$

$$21 \div 6 = 3\frac{1}{2}$$

$$35 \div 9 = 3\frac{8}{9}$$

$$13 \div 8 = 1\frac{5}{8}$$

$$17 \div 5 = 3\frac{2}{5}$$



Divide and express your answers in the lowest possible terms

$$\frac{1}{4} \div 4 = \frac{1}{16}$$

$$\frac{4}{6} \div 3 = \frac{2}{9}$$

$$\frac{2}{3} \div 5 = \frac{2}{15}$$

$$\frac{1}{2} \div 4 = \frac{1}{8}$$

$$\frac{3}{3} \div 6 = \frac{1}{6}$$

$$\frac{2}{9} \div 3 = \frac{2}{27}$$

$$\frac{1}{9} \div 7 = \frac{1}{63}$$

$$\frac{1}{5} \div 4 = \frac{1}{20}$$

$$\frac{3}{5} \div 8 = \frac{3}{40}$$

$$\frac{5}{6} \div 6 = \frac{5}{36}$$

$$\frac{1}{5} \div 3 = \frac{1}{9}$$

$$\frac{1}{7} \div 6 = \frac{1}{42}$$

$$\frac{1}{6} \div 8 = \frac{1}{48}$$

$$\frac{1}{5} \div 2 = \frac{1}{10}$$

$$\frac{1}{3} \div 2 = \frac{1}{6}$$

$$\frac{4}{9} \div 4 = \frac{1}{9}$$

$$\frac{5}{8} \div 9 = \frac{5}{72}$$

$$\frac{9}{2} \div 5 = \frac{9}{10}$$

$$\frac{3}{5} \div 2 = \frac{3}{10}$$

$$\frac{2}{3} \div 6 = \frac{1}{9}$$

$$\frac{4}{5} \div 4 = \frac{1}{5}$$

$$\frac{3}{4} \div 4 = \frac{3}{16}$$

$$\frac{6}{7} \div 2 = \frac{3}{7}$$

$$\frac{1}{9} \div 3 = \frac{1}{27}$$

$$\frac{5}{3} \div 3 = \frac{5}{9}$$



Divide and express your answers in the lowest possible terms

$$\frac{1}{3} \div 4 = \frac{1}{12}$$

$$\frac{4}{5} \div 3 = \frac{4}{15}$$

$$\frac{2}{4} \div 5 = \frac{1}{10}$$

$$\frac{1}{3} \div 4 = \frac{1}{12}$$

$$\frac{3}{3} \div 4 = \frac{1}{4}$$

$$\frac{2}{7} \div 4 = \frac{1}{14}$$

$$\frac{1}{8} \div 7 = \frac{1}{56}$$

$$\frac{1}{5} \div 5 = \frac{1}{25}$$

$$\frac{2}{6} \div 8 = \frac{1}{24}$$

$$\frac{5}{6} \div 5 = \frac{1}{6}$$

$$\frac{1}{2} \div 3 = \frac{1}{6}$$

$$\frac{2}{7} \div 5 = \frac{2}{35}$$

$$\frac{1}{6} \div 8 = \frac{1}{48}$$

$$\frac{1}{5} \div 3 = \frac{1}{15}$$

$$\frac{1}{5} \div 9 = \frac{1}{45}$$

$$\frac{4}{9} \div 3 = \frac{4}{27}$$

$$\frac{3}{8} \div 9 = \frac{1}{24}$$

$$\frac{3}{2} \div 4 = \frac{3}{8}$$

$$\frac{4}{5} \div 2 = \frac{4}{10}$$

$$\frac{1}{3} \div 6 = \frac{1}{18}$$

$$\frac{4}{5} \div 3 = \frac{4}{15}$$

$$\frac{3}{4} \div 4 = \frac{3}{16}$$

$$\frac{2}{7} \div 2 = \frac{1}{7}$$

$$\frac{1}{9} \div 8 = \frac{1}{72}$$

$$\frac{5}{4} \div 4 = \frac{5}{16}$$



Multiplying Fractions

Multiply and express your answers in mixed numbers

$$\frac{1}{3} \times 4 = 1 \frac{1}{3}$$

$$\frac{2}{5} \times 8 = 3 \frac{1}{5}$$

$$\frac{2}{4} \times 5 = 2 \frac{1}{2}$$

$$\frac{2}{7} \times 9 = 2 \frac{4}{7}$$

$$\frac{1}{7} \times 9 = 1 \frac{2}{7}$$

$$\frac{1}{3} \times 7 = 2 \frac{1}{3}$$

$$\frac{1}{2} \times 9 = 4 \frac{1}{2}$$

$$\frac{2}{5} \times 4 = 1 \frac{3}{5}$$

$$\frac{1}{4} \times 5 = 1 \frac{1}{4}$$

$$\frac{1}{3} \times 8 = 2 \frac{2}{3}$$

$$\frac{4}{3} \times 4 = 5 \frac{1}{3}$$

$$\frac{1}{2} \times 5 = 2 \frac{1}{2}$$

$$\frac{1}{3} \times 5 = 1 \frac{2}{3}$$

$$\frac{2}{3} \times 11 = 7 \frac{1}{3}$$

$$\frac{1}{6} \times 8 = 1 \frac{1}{3}$$

$$\frac{5}{3} \times 4 = 6 \frac{2}{3}$$

$$\frac{1}{5} \times 9 = 1 \frac{4}{5}$$

$$\frac{1}{7} \times 9 = 1 \frac{2}{7}$$

$$\frac{3}{8} \times 4 = 1 \frac{1}{2}$$

$$\frac{2}{7} \times 4 = 1 \frac{1}{7}$$

$$\frac{1}{6} \times 9 = 1 \frac{1}{2}$$

$$\frac{1}{5} \times 24 = 4 \frac{4}{5}$$

$$\frac{1}{4} \times 39 = 9 \frac{3}{4}$$

$$\frac{6}{7} \times 4 = 3 \frac{3}{7}$$

$$\frac{4}{5} \times 4 = 3 \frac{1}{5}$$



Multiplying Fractions

Multiply and express your answers in mixed numbers

$$\frac{1}{3} \times 5 = 1 \frac{2}{3}$$

$$\frac{2}{4} \times 7 = 3 \frac{1}{2}$$

$$\frac{2}{3} \times 5 = 3 \frac{1}{3}$$

$$\frac{2}{6} \times 7 = 2 \frac{1}{3}$$

$$\frac{1}{5} \times 9 = 1 \frac{4}{5}$$

$$\frac{1}{6} \times 7 = 1 \frac{1}{6}$$

$$\frac{1}{2} \times 8 = 4$$

$$\frac{2}{3} \times 4 = 2 \frac{2}{3}$$

$$\frac{1}{4} \times 6 = 1 \frac{1}{2}$$

$$\frac{1}{3} \times 7 = 2 \frac{1}{3}$$

$$\frac{5}{3} \times 4 = 6 \frac{2}{3}$$

$$\frac{1}{2} \times 7 = 3 \frac{1}{2}$$

$$\frac{2}{3} \times 5 = 3 \frac{1}{3}$$

$$\frac{2}{3} \times 10 = 6 \frac{2}{3}$$

$$\frac{1}{6} \times 9 = 1 \frac{1}{2}$$

$$\frac{5}{3} \times 3 = 5$$

$$\frac{1}{5} \times 8 = 1 \frac{3}{5}$$

$$\frac{1}{6} \times 9 = 1 \frac{1}{2}$$

$$\frac{3}{8} \times 4 = 1 \frac{1}{2}$$

$$\frac{2}{7} \times 5 = 1 \frac{3}{7}$$

$$\frac{2}{6} \times 9 = 3$$

$$\frac{1}{6} \times 24 = 4$$

$$\frac{1}{4} \times 31 = 7 \frac{3}{4}$$

$$\frac{4}{7} \times 4 = 2 \frac{2}{7}$$

$$\frac{3}{5} \times 4 = 2 \frac{2}{5}$$



Multiply and express your answers in the lowest terms

$$\frac{1}{3} \times \frac{1}{3} = \frac{1}{9}$$

$$\frac{1}{2} \times \frac{1}{3} = \frac{1}{6}$$

$$\frac{2}{4} \times \frac{2}{4} = \frac{1}{4}$$

$$\frac{2}{9} \times \frac{3}{7} = \frac{2}{21}$$

$$\frac{3}{7} \times \frac{1}{6} = \frac{1}{14}$$

$$\frac{1}{7} \times \frac{6}{7} = \frac{6}{49}$$

$$\frac{1}{2} \times \frac{1}{2} = \frac{1}{4}$$

$$\frac{1}{5} \times \frac{4}{6} = \frac{2}{15}$$

$$\frac{2}{7} \times \frac{2}{7} = \frac{4}{49}$$

$$\frac{1}{5} \times \frac{4}{2} = \frac{2}{5}$$

$$\frac{4}{3} \times \frac{2}{3} = \frac{8}{9}$$

$$\frac{4}{3} \times \frac{1}{3} = \frac{4}{9}$$

$$\frac{2}{3} \times \frac{2}{3} = \frac{4}{9}$$

$$\frac{1}{3} \times \frac{2}{6} = \frac{1}{9}$$

$$\frac{1}{3} \times \frac{2}{8} = \frac{1}{12}$$

$$\frac{1}{3} \times \frac{5}{6} = \frac{5}{18}$$

$$\frac{1}{7} \times \frac{3}{5} = \frac{3}{35}$$

$$\frac{3}{5} \times \frac{3}{4} = \frac{9}{20}$$

$$\frac{2}{7} \times \frac{5}{7} = \frac{10}{49}$$

$$\frac{5}{6} \times \frac{2}{3} = \frac{5}{9}$$

$$\frac{2}{6} \times \frac{2}{3} = \frac{2}{9}$$

$$\frac{1}{4} \times \frac{3}{5} = \frac{3}{20}$$

$$\frac{2}{3} \times \frac{1}{3} = \frac{2}{9}$$

$$\frac{1}{4} \times \frac{6}{8} = \frac{3}{16}$$



Multiply and express your answers in the lowest terms

$$\frac{1}{4} \times \frac{1}{3} = \frac{1}{12}$$

$$\frac{1}{8} \times \frac{1}{3} = \frac{1}{24}$$

$$\frac{2}{5} \times \frac{2}{4} = \frac{1}{10}$$

$$\frac{2}{5} \times \frac{3}{7} = \frac{6}{35}$$

$$\frac{3}{4} \times \frac{1}{4} = \frac{3}{16}$$

$$\frac{2}{7} \times \frac{6}{6} = \frac{2}{7}$$

$$\frac{1}{3} \times \frac{1}{2} = \frac{1}{6}$$

$$\frac{1}{8} \times \frac{4}{6} = \frac{1}{12}$$

$$\frac{1}{7} \times \frac{2}{7} = \frac{2}{49}$$

$$\frac{1}{9} \times \frac{4}{2} = \frac{2}{9}$$

$$\frac{4}{7} \times \frac{2}{3} = \frac{8}{21}$$

$$\frac{4}{3} \times \frac{1}{3} = \frac{4}{9}$$

$$\frac{2}{5} \times \frac{2}{3} = \frac{4}{15}$$

$$\frac{1}{7} \times \frac{2}{6} = \frac{1}{21}$$

$$\frac{1}{3} \times \frac{3}{8} = \frac{1}{8}$$

$$\frac{1}{4} \times \frac{5}{6} = \frac{5}{24}$$

$$\frac{1}{4} \times \frac{3}{5} = \frac{3}{20}$$

$$\frac{2}{5} \times \frac{3}{4} = \frac{3}{10}$$

$$\frac{2}{6} \times \frac{5}{7} = \frac{5}{21}$$

$$\frac{5}{6} \times \frac{2}{3} = \frac{5}{9}$$

$$\frac{1}{6} \times \frac{2}{3} = \frac{1}{9}$$

$$\frac{1}{3} \times \frac{3}{5} = \frac{1}{5}$$

$$\frac{2}{3} \times \frac{2}{3} = \frac{4}{9}$$

$$\frac{3}{4} \times \frac{6}{8} = \frac{9}{16}$$



Dividing Fractions

Divide and express your answers in mixed numbers and the lowest terms

$$\frac{1}{3} \div \frac{1}{4} = 1\frac{1}{3}$$

$$\frac{1}{2} \div \frac{1}{3} = 1\frac{1}{2}$$

$$\frac{2}{4} \div \frac{1}{5} = 2\frac{1}{2}$$

$$\frac{2}{9} \div \frac{3}{7} = \frac{14}{27}$$

$$\frac{3}{7} \div \frac{1}{6} = 2\frac{4}{7}$$

$$\frac{6}{7} \div \frac{1}{4} = 3\frac{3}{7}$$

$$\frac{1}{2} \div \frac{1}{7} = 3\frac{1}{2}$$

$$\frac{1}{5} \div \frac{1}{6} = 1\frac{1}{5}$$

$$\frac{5}{7} \div \frac{1}{9} = 6\frac{3}{7}$$

$$\frac{4}{5} \div \frac{1}{2} = 1\frac{3}{5}$$

$$\frac{4}{5} \div \frac{1}{3} = 2\frac{2}{5}$$

$$\frac{1}{2} \div \frac{1}{9} = 4\frac{1}{2}$$

$$\frac{2}{7} \div \frac{2}{8} = 1\frac{1}{7}$$

$$\frac{1}{3} \div \frac{1}{7} = 2\frac{1}{3}$$

$$\frac{1}{3} \div \frac{1}{8} = 2\frac{2}{3}$$

$$\frac{2}{3} \div \frac{2}{5} = 1\frac{2}{3}$$

$$\frac{5}{7} \div \frac{1}{5} = 3\frac{4}{7}$$

$$\frac{3}{5} \div \frac{1}{4} = 2\frac{2}{5}$$

$$\frac{5}{7} \div \frac{2}{7} = 2\frac{1}{2}$$

$$\frac{2}{6} \div \frac{2}{3} = \frac{1}{2}$$

$$\frac{2}{6} \div \frac{1}{8} = 2\frac{2}{3}$$

$$\frac{3}{4} \div \frac{3}{5} = 1\frac{1}{4}$$

$$\frac{2}{3} \div \frac{1}{7} = 4\frac{2}{3}$$

$$\frac{1}{4} \div \frac{1}{9} = 2\frac{1}{4}$$



Dividing Fractions

Divide and express your answers in mixed numbers and the lowest terms

$$\frac{1}{5} \div \frac{1}{4} = \frac{4}{5}$$

$$\frac{1}{3} \div \frac{1}{3} = 1$$

$$\frac{1}{4} \div \frac{1}{5} = 1\frac{1}{4}$$

$$\frac{1}{9} \div \frac{3}{7} = \frac{7}{27}$$

$$\frac{2}{7} \div \frac{1}{6} = 1\frac{5}{7}$$

$$\frac{6}{8} \div \frac{1}{4} = 3$$

$$\frac{1}{3} \div \frac{1}{7} = 2\frac{1}{3}$$

$$\frac{1}{4} \div \frac{4}{6} = \frac{3}{8}$$

$$\frac{5}{7} \div \frac{1}{9} = 6\frac{3}{7}$$

$$\frac{3}{5} \div \frac{1}{2} = 1\frac{1}{5}$$

$$\frac{4}{6} \div \frac{1}{3} = 2$$

$$\frac{1}{7} \div \frac{1}{9} = 1\frac{2}{7}$$

$$\frac{1}{7} \div \frac{2}{8} = \frac{4}{7}$$

$$\frac{1}{2} \div \frac{1}{7} = 3\frac{1}{2}$$

$$\frac{1}{4} \div \frac{1}{8} = 2$$

$$\frac{1}{3} \div \frac{2}{5} = 1\frac{1}{6}$$

$$\frac{1}{7} \div \frac{1}{5} = \frac{5}{7}$$

$$\frac{3}{5} \div \frac{1}{4} = 2\frac{2}{5}$$

$$\frac{1}{7} \div \frac{2}{7} = \frac{1}{2}$$

$$\frac{2}{9} \div \frac{2}{3} = \frac{1}{3}$$

$$\frac{2}{6} \div \frac{1}{8} = 2\frac{2}{3}$$

$$\frac{2}{4} \div \frac{3}{5} = \frac{5}{6}$$

$$\frac{2}{5} \div \frac{1}{7} = 2\frac{4}{5}$$

$$\frac{1}{3} \div \frac{1}{9} = 3$$



Convert the following fractions into percents (round off to the nearest hundredth)

$\frac{1}{3} = 33.33\%$

$\frac{4}{6} = 66.67\%$

$\frac{1}{6} = 16.67\%$

$\frac{2}{7} = 28.57\%$

$\frac{2}{3} = 66.67\%$

$\frac{1}{9} = 11.11\%$

$\frac{3}{7} = 42.86\%$

$\frac{1}{8} = 12.5\%$

$\frac{1}{11} = 9.09\%$

$\frac{2}{13} = 15.38\%$

$\frac{3}{14} = 21.43\%$

$\frac{5}{9} = 55.56\%$

$\frac{1}{3} = 33.33\%$

$\frac{1}{7} = 14.29\%$

$\frac{6}{8} = 75\%$

$\frac{1}{2} = 50\%$

$\frac{4}{3} = 133.33\%$

$\frac{6}{7} = 85.71\%$

$\frac{4}{5} = 80\%$

$\frac{2}{6} = 33.33\%$

$\frac{9}{9} = 100\%$

$\frac{8}{7} = 114.29\%$

$\frac{5}{8} = 62.5\%$

$\frac{9}{3} = 300\%$

$\frac{8}{2} = 400\%$

$\frac{3}{17} = 17.65\%$

$\frac{1}{25} = 4\%$

$\frac{1}{50} = 2\%$

$\frac{1}{75} = 1.33\%$



Convert the following fractions into percents (round off to the nearest hundredth)

$\frac{3}{7} = 42.86\%$

$\frac{4}{3} = 133.33\%$

$\frac{1}{8} = 12.5\%$

$\frac{2}{11} = 18.18\%$

$\frac{2}{9} = 22.22\%$

$\frac{1}{3} = 33.33\%$

$\frac{3}{6} = 50\%$

$\frac{1}{7} = 14.29\%$

$\frac{1}{13} = 7.69\%$

$\frac{2}{15} = 13.33\%$

$\frac{3}{19} = 15.79\%$

$\frac{5}{8} = 62.5\%$

$\frac{7}{2} = 350\%$

$\frac{7}{7} = 100\%$

$\frac{6}{7} = 85.71\%$

$\frac{6}{2} = 300\%$

$\frac{4}{9} = 44.44\%$

$\frac{6}{4} = 150\%$

$\frac{7}{3} = 233.33\%$

$\frac{4}{5} = 80\%$

$\frac{5}{9} = 55.56\%$

$\frac{3}{7} = 42.86\%$

$\frac{3}{8} = 37.5\%$

$\frac{2}{3} = 66.67\%$

$\frac{5}{2} = 250\%$

$\frac{4}{17} = 23.53\%$

$\frac{9}{25} = 36\%$

$\frac{3}{50} = 6\%$

$\frac{9}{75} = 12\%$



Calculate the following percentages

$75\% \text{ of } 150 = 112.5$

$30\% \text{ of } 180 = 54$

$25\% \text{ of } 170 = 42.5$

$20\% \text{ of } 160 = 32$

$15\% \text{ of } 150 = 22.5$

$50\% \text{ of } 145 = 72.5$

$45\% \text{ of } 200 = 90$

$10\% \text{ of } 198 = 19.8$

$60\% \text{ of } 450 = 270$

$40\% \text{ of } 325 = 130$

$60\% \text{ of } 400 = 240$

$73\% \text{ of } 250 = 182.5$

$25\% \text{ of } 190 = 47.5$

$65\% \text{ of } 150 = 97.5$

$50\% \text{ of } 153 = 76.50$

$50\% \text{ of } 110 = 55$

$95\% \text{ of } 160 = 152$

$75\% \text{ of } 500 = 375$

$65\% \text{ of } 320 = 208$

$35\% \text{ of } 170 = 59.5$

$88\% \text{ of } 150 = 132$

$40\% \text{ of } 100 = 40$

$33\% \text{ of } 150 = 49.5$

$75\% \text{ of } 270 = 202.5$

$90\% \text{ of } 250 = 225$

$47\% \text{ of } 250 = 117.5$

$23\% \text{ of } 200 = 46$



Calculate the following percentages

$25\% \text{ of } 150 = 37.5$

$40\% \text{ of } 180 = 72$

$15\% \text{ of } 170 = 25.5$

$10\% \text{ of } 160 = 16$

$35\% \text{ of } 150 = 52.5$

$60\% \text{ of } 145 = 87$

$42\% \text{ of } 200 = 84$

$50\% \text{ of } 198 = 99$

$61\% \text{ of } 450 = 274.5$

$48\% \text{ of } 325 = 156$

$90\% \text{ of } 400 = 360$

$72\% \text{ of } 250 = 180$

$65\% \text{ of } 190 = 123.5$

$75\% \text{ of } 150 = 112.5$

$60\% \text{ of } 153 = 91.8$

$80\% \text{ of } 110 = 88$

$95\% \text{ of } 160 = 152$

$15\% \text{ of } 500 = 75$

$15\% \text{ of } 320 = 48$

$75\% \text{ of } 170 = 38.25$

$18\% \text{ of } 150 = 27$

$30\% \text{ of } 100 = 30$

$37\% \text{ of } 150 = 55.5$

$25\% \text{ of } 270 = 67.5$

$92\% \text{ of } 250 = 230$

$49\% \text{ of } 250 = 122.5$

$33\% \text{ of } 200 = 66$

