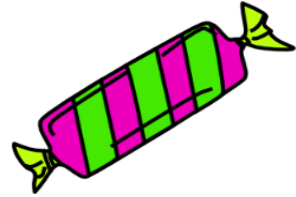


Name: \_\_\_\_\_ Class: \_\_\_\_\_

**Question 1**

15% of my candies were strawberry candies.  
I had 30 strawberry candies. How many candies did I have?

**Question 2**

54 students failed a math test. This is 27% of the total number of students.  
How many students passed the test?

**Question 3**

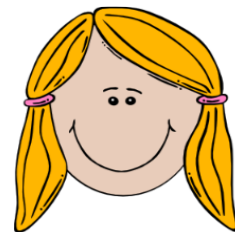
Mike and Mandy bought the same item. Mike paid 15,000\$, but  
Mandy paid only 12,000\$. How much discount did Mandy get (in  
percents)?

**Question 4**

140 members of a football club have blue eyes? 75% of the members of a football club do  
not have blue eyes. How many members do not have blue eyes?

**Question 5**

225 students in my school, or 15%, have blond hair. What is  
the total number of students in my school?

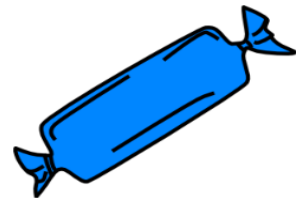


### Question 6

Gerry had a 15% higher score for her math exam than Danny. Danny scored 60 points. How many points did Gerry score?

### Question 7

After eating 80% of my candies, I had 5 candies left. How many candies did I have at first?



### Question 8

Last year Joe scored 80 point on his math exam. This year he got 64 points. With what percentage did his score decrease?

### Question 9

Yesterday I sold 64 ice-creams. This morning I sold 80 ice-creams. With what percentage did my sales increase?



### Question 10

Peter had 60\$. He spent 24\$ on food and 18\$ on a t-shirt. What percentage of his money did he have left?

## Answers

Q 1 : 200 candies

Q 6 : 69 points

Q 2 : 146 students

Q 7 : 25 candies

Q 3 : 20%

Q 8 : 20%

Q 4 : 420 members

Q 9 : 25%

Q 5 : 1,500 students

Q 10 : 30%