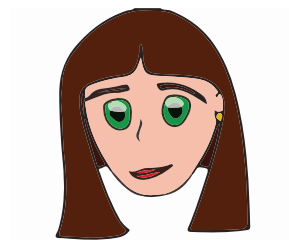


Length Word Problems

Name: _____ Class: _____

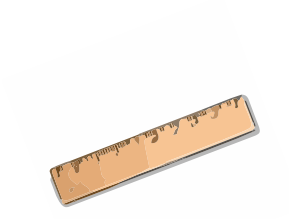
Solve the following word problems. Show number sentence and your workings.

1. Lisa is 130 cm tall. Nina is 5 cm shorter than Lisa.
How tall is Nina?



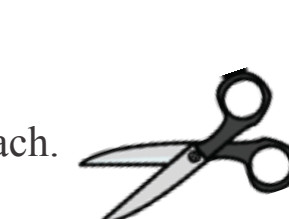
2. John is 130 cm tall. Peter is 5 cm taller than John.
How tall is Peter?

3. Two rulers are 85 cm and 30 cm long. What is their
total length?



4. Line segment A is 120 cm long. Line segment B is 95
cm long. How much shorter is line segment B than A?

5. Andrew cut a piece of paper in 3 equal pieces of 6 cm each.
How long was the paper before he cut it?



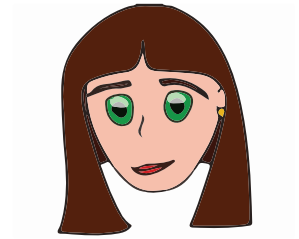
6. A building is 80 meters tall. A flagpole on top of it is 25 meters
tall. How high is the top of the flagpole from the ground?

Answers

Solve the following word problems. Show number sentence and your workings.

1. Lisa is 130 cm tall. Nina is 5 cm shorter than Lisa.
How tall is Nina?

$$130 - 5 = 125 \text{ centimeters}$$

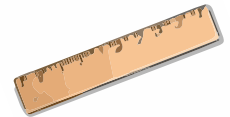


2. John is 130 cm tall. Peter is 5 cm taller than John.
How tall is Peter?

$$130 + 5 = 135 \text{ centimeters}$$

3. Two rulers are 85 cm and 30 cm long. What is their
total length?

$$85 + 30 = 115 \text{ centimeters}$$



4. Line segment A is 120 cm long. Line segment B is 95
cm long. How much shorter is line segment B than A?

$$120 - 95 = 25 \text{ centimeters}$$

5. Andrew cut a piece of paper in 3 equal pieces of 6 cm each.
How long was the paper before he cut it?

$$3 \times 6 = 18 \text{ centimeters}$$



6. A building is 80 meters tall. A flagpole on top of it is 25 meters
tall. How high is the top of the flagpole from the ground?

$$80 + 25 = 105 \text{ meters}$$