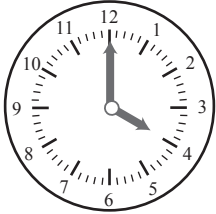


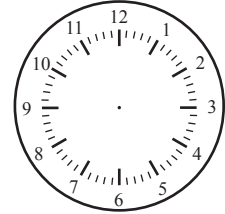
Later/Earlier

Name: _____ Class: _____

Read the clock on the left, follow the instruction and draw the hands on the clock on the right side.



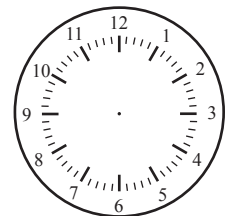
1 hour later



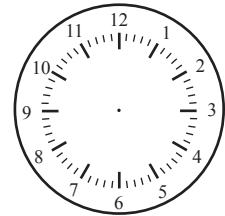
5:00



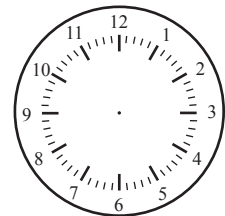
2 hours later



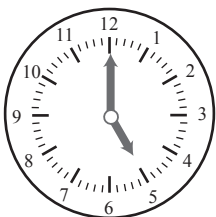
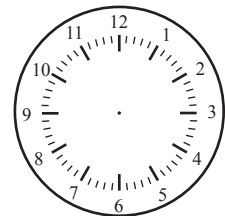
30 minutes later



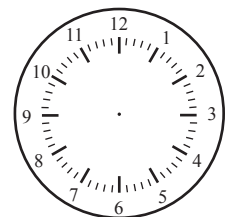
2 hours earlier



30 minutes later



30 minutes earlier



Answers

Read the clock on the left, follow the instruction and draw the hands on the clock on the right side.



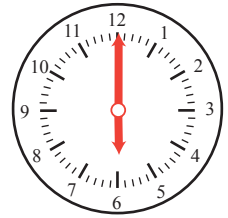
1 hour later



5:00



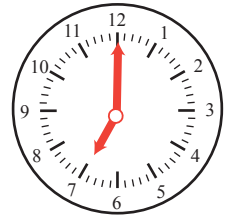
2 hours later



6:00



30 minutes later



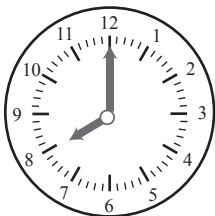
7:00



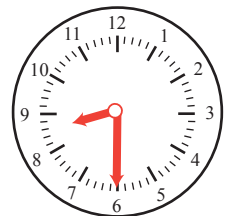
2 hours earlier



3:00



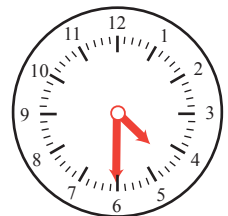
30 minutes later



8:30



30 minutes earlier



4:30