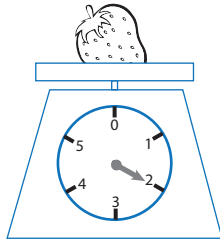
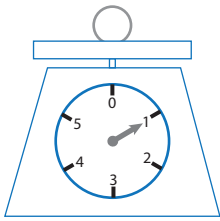
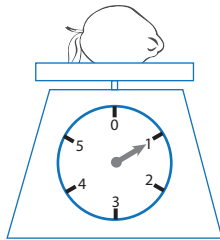
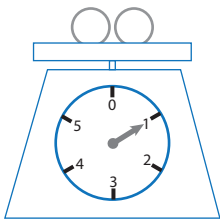


Measuring weight

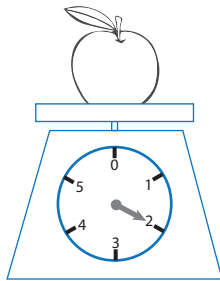
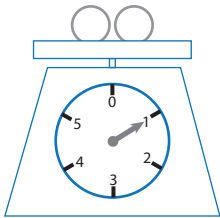
What is the mass of the objects?



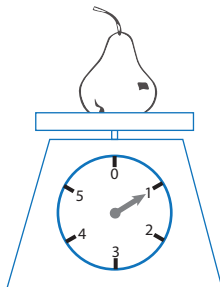
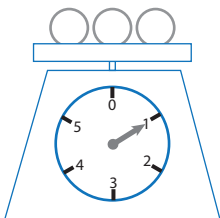
The strawberry is ___ heavy



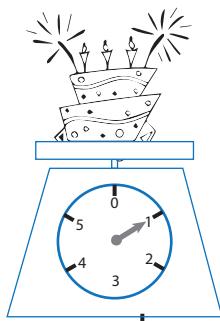
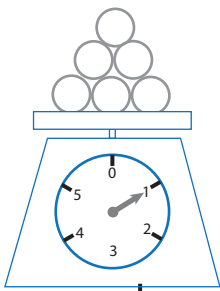
The lemon is ___ heavy



The apple is ___ heavy



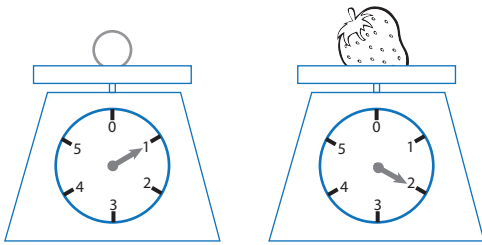
The pear is ___ heavy



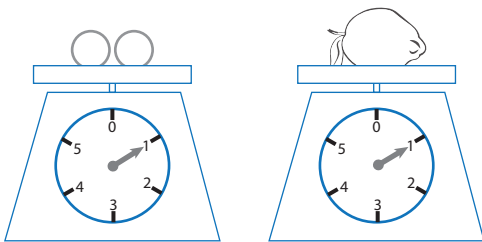
The cake is ___ heavy

Measuring weight

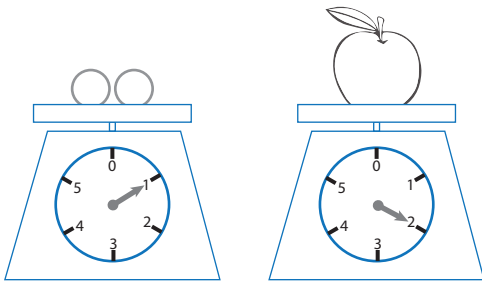
What is the mass of the objects?



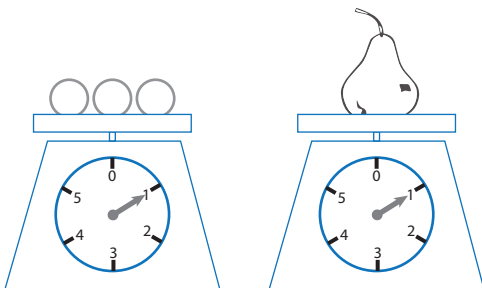
The strawberry is 2 heavy



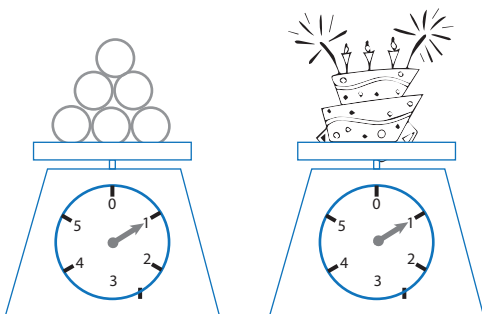
The lemon is 2 heavy



The apple is 4 heavy



The pear is 3 heavy



The cake is 6 heavy