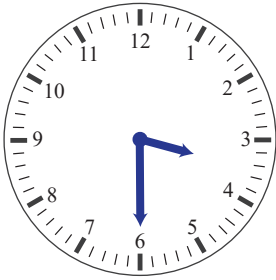
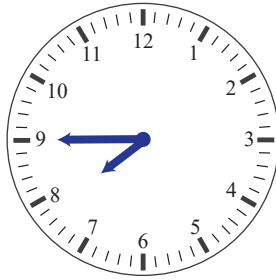


## True or False

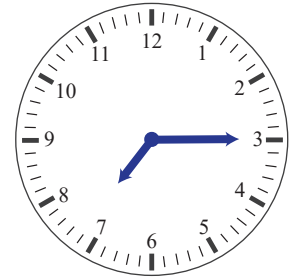
Are the following time notations True (T) or False (F)



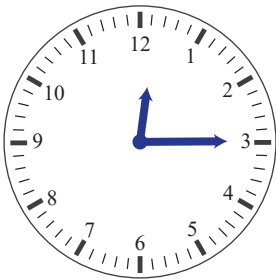
half past 3



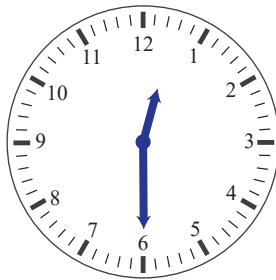
7 : 30



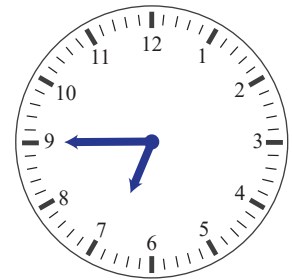
quarter past 7



12 : 15



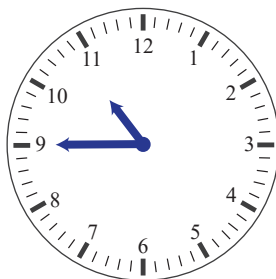
half past 12



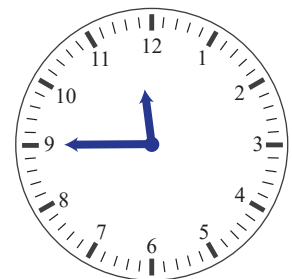
quarter to 8



quarter past 4



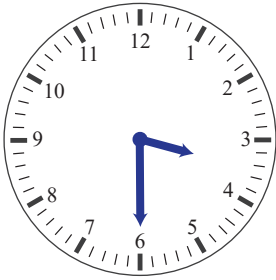
quarter to 11



11 : 45

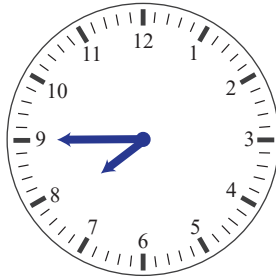
## True or False

Are the following time notations True (T) or False (F)



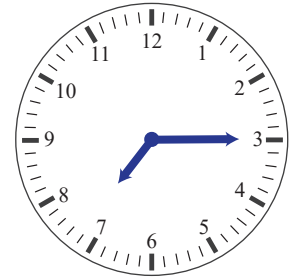
half past 3

T



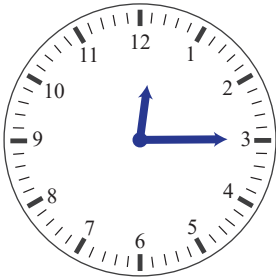
7 : 30

F



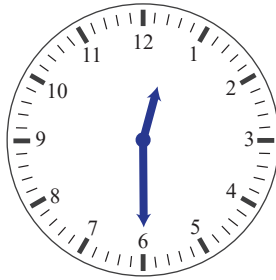
quarter past 7

T



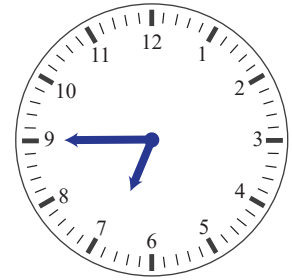
12 : 15

T



half past 12

T



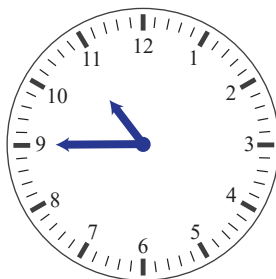
quarter to 8

F



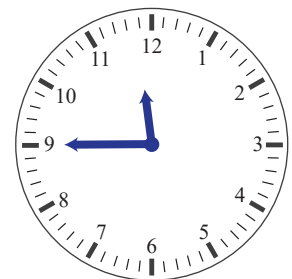
quarter past 4

F



quarter to 11

T



11 : 45

T