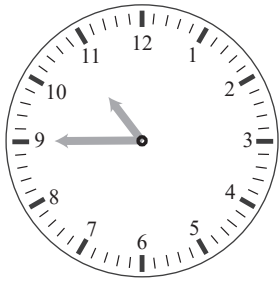


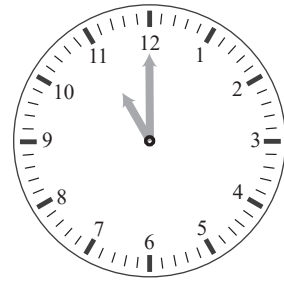
15 or 30 minutes later

Draw the hands on the clocks and fill in the time

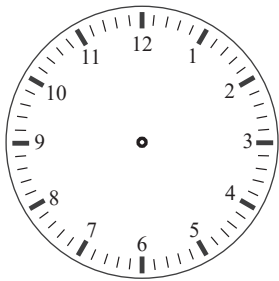


10:45

15 minutes later

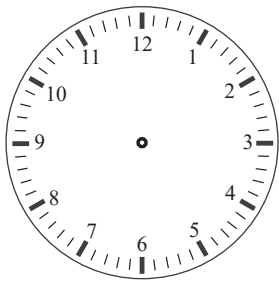
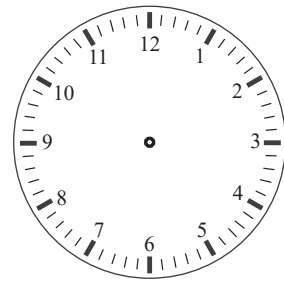


11:00



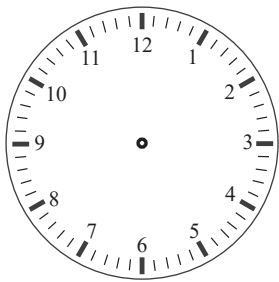
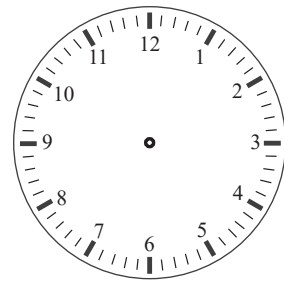
7:15

30 minutes later



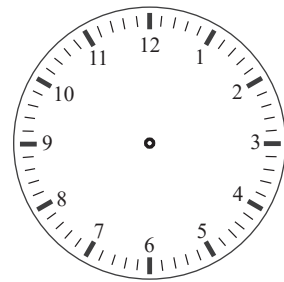
8:30

15 minutes later



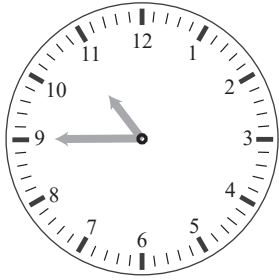
9:45

30 minutes later



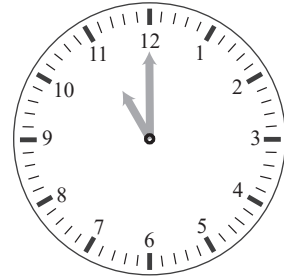
15 or 30 minutes later

Draw the hands on the clocks and fill in the time



10:45

15 minutes later



11:00



7:15

30 minutes later

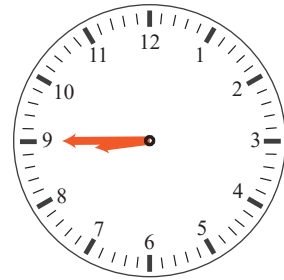


7:45

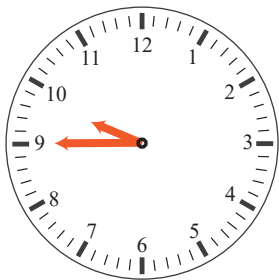


8:30

15 minutes later



8:45



9:45

30 minutes later



10:15