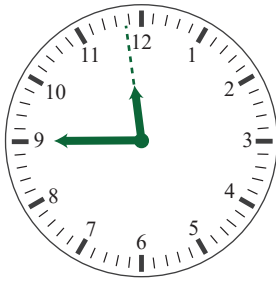
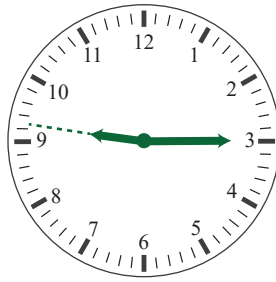


Telling time to the nearest 15 minutes

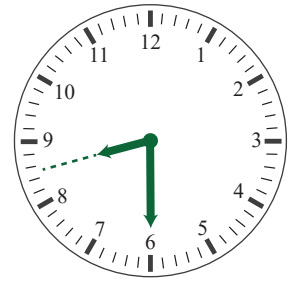
Write the time. Use 'half past', '15 to' and '15 past'



15 to 12

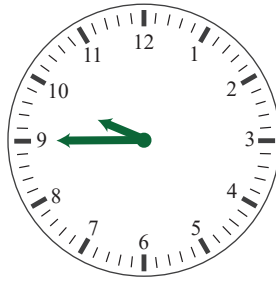


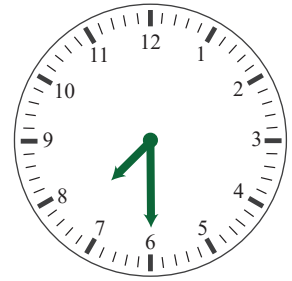
15 past 9

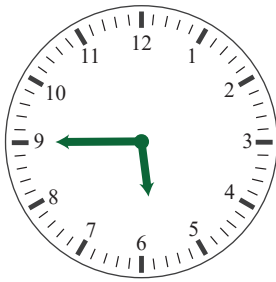


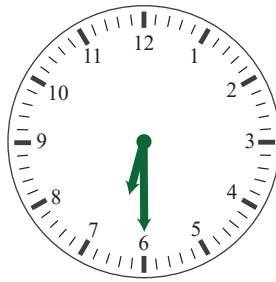
half past 8

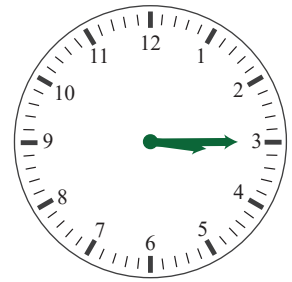


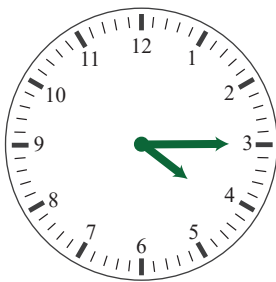


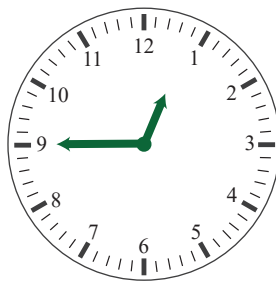


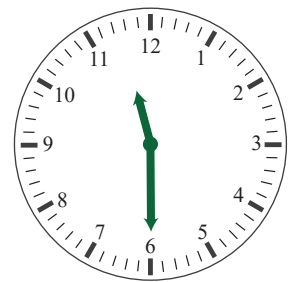






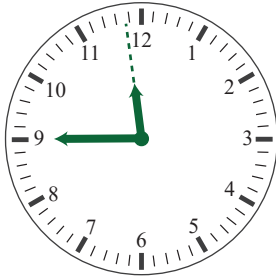




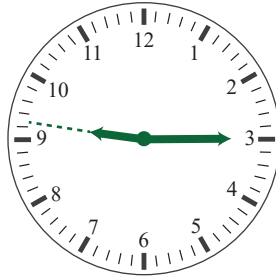


Telling time to the nearest 15 minutes

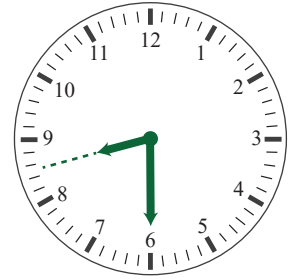
Write the time. Use 'half past', '15 to' and '15 past'



15 to 12



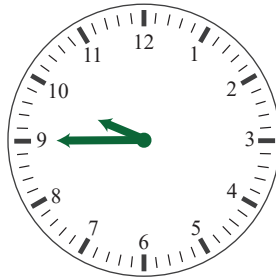
15 past 9



half past 8



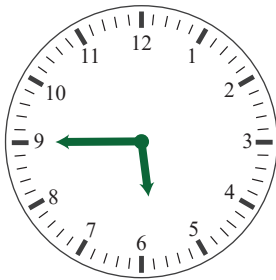
15 past 5



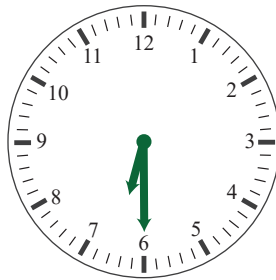
15 to 10



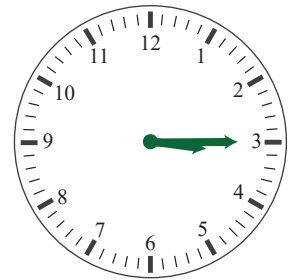
half past 7



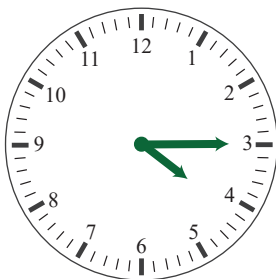
15 to 6



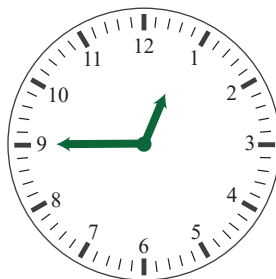
half past 6



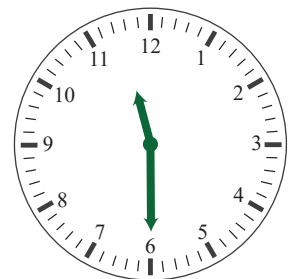
15 past 3



15 past 4



15 to 1



half past 11
