

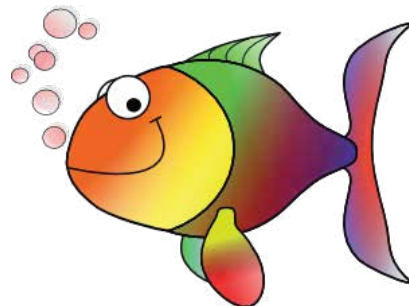
3 Digit Division

Name: _____ Class: _____

Calculate the quotient and remainder

$102 \div 4 =$

$163 \div 8 =$



$252 \div 5 =$

$121 \div 3 =$

$203 \div 4 =$

$229 \div 5 =$

$121 \div 4 =$

$141 \div 2 =$

$134 \div 6 =$

$342 \div 4 =$

$722 \div 8 =$

$562 \div 7 =$

$394 \div 6 =$

$201 \div 5 =$

$106 \div 9 =$

$163 \div 4 =$

$124 \div 8 =$

$102 \div 5 =$

$117 \div 5 =$

$113 \div 5 =$

$127 \div 9 =$

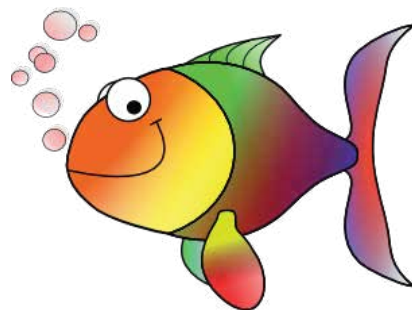
$109 \div 7 =$

Answers

Calculate the quotient and remainder

$102 \div 4 = 25 \text{ R } 2$

$163 \div 8 = 20 \text{ R } 3$



$252 \div 5 = 50 \text{ R } 2$

$121 \div 3 = 40 \text{ R } 1$

$203 \div 4 = 50 \text{ R } 3$

$229 \div 5 = 45 \text{ R } 4$

$121 \div 4 = 30 \text{ R } 1$

$141 \div 2 = 70 \text{ R } 1$

$134 \div 6 = 22 \text{ R } 2$

$342 \div 4 = 85 \text{ R } 2$

$722 \div 8 = 90 \text{ R } 2$

$562 \div 7 = 80 \text{ R } 2$

$394 \div 6 = 65 \text{ R } 4$

$201 \div 5 = 40 \text{ R } 1$

$106 \div 9 = 11 \text{ R } 7$

$163 \div 4 = 40 \text{ R } 3$

$124 \div 8 = 15 \text{ R } 4$

$102 \div 5 = 20 \text{ R } 2$

$117 \div 5 = 23 \text{ R } 2$

$113 \div 5 = 22 \text{ R } 3$

$127 \div 9 = 14 \text{ R } 1$

$109 \div 7 = 15 \text{ R } 4$