

# Percentages of Numbers

Name: \_\_\_\_\_ Class: \_\_\_\_\_

Calculate the following percentages

$25\% \text{ of } 150 =$

$40\% \text{ of } 180 =$

$15\% \text{ of } 170 =$

$10\% \text{ of } 160 =$

$35\% \text{ of } 150 =$

$60\% \text{ of } 145 =$

$42\% \text{ of } 200 =$

$50\% \text{ of } 198 =$

$61\% \text{ of } 450 =$

$48\% \text{ of } 325 =$

$90\% \text{ of } 400 =$

$72\% \text{ of } 250 =$

$65\% \text{ of } 190 =$

$75\% \text{ of } 150 =$

$60\% \text{ of } 153 =$

$80\% \text{ of } 110 =$

$95\% \text{ of } 160 =$

$15\% \text{ of } 500 =$

$15\% \text{ of } 320 =$

$75\% \text{ of } 170 =$

$18\% \text{ of } 150 =$

$30\% \text{ of } 100 =$

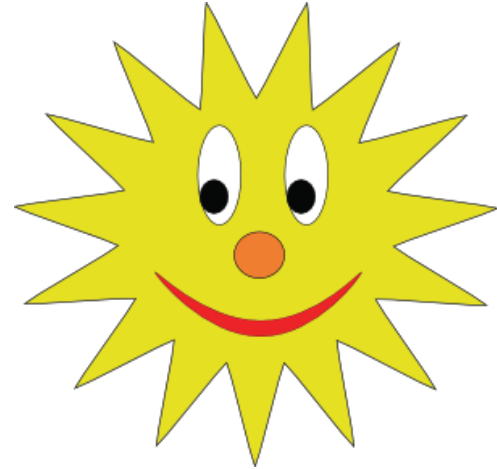
$37\% \text{ of } 150 =$

$25\% \text{ of } 270 =$

$92\% \text{ of } 250 =$

$49\% \text{ of } 250 =$

$33\% \text{ of } 200 =$



# Answers

Calculate the following percentages

$25\% \text{ of } 150 = 37.5$

$40\% \text{ of } 180 = 72$

$15\% \text{ of } 170 = 25.5$

$10\% \text{ of } 160 = 16$

$35\% \text{ of } 150 = 52.5$

$60\% \text{ of } 145 = 87$

$42\% \text{ of } 200 = 84$

$50\% \text{ of } 198 = 99$

$61\% \text{ of } 450 = 274.5$

$48\% \text{ of } 325 = 156$

$90\% \text{ of } 400 = 360$

$72\% \text{ of } 250 = 180$

$65\% \text{ of } 190 = 123.5$

$75\% \text{ of } 150 = 112.5$

$60\% \text{ of } 153 = 91.8$

$80\% \text{ of } 110 = 88$

$95\% \text{ of } 160 = 152$

$15\% \text{ of } 500 = 75$

$15\% \text{ of } 320 = 48$

$75\% \text{ of } 170 = 38.25$

$18\% \text{ of } 150 = 27$

$30\% \text{ of } 100 = 30$

$37\% \text{ of } 150 = 55.5$

$25\% \text{ of } 270 = 67.5$

$92\% \text{ of } 250 = 230$

$49\% \text{ of } 250 = 122.5$

$33\% \text{ of } 200 = 66$

