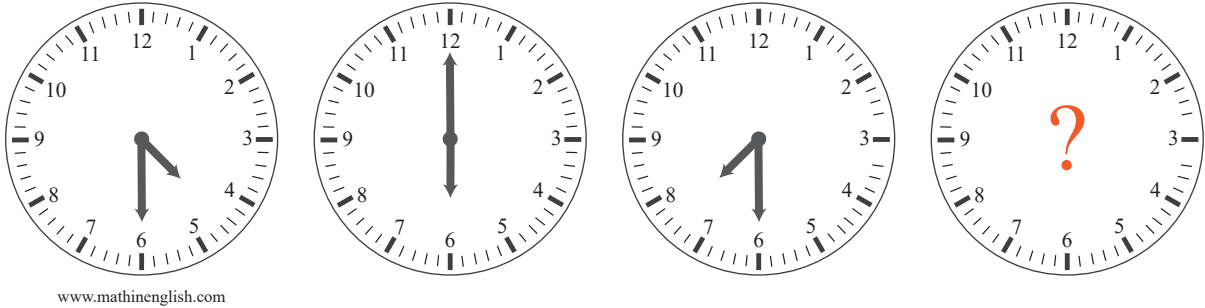


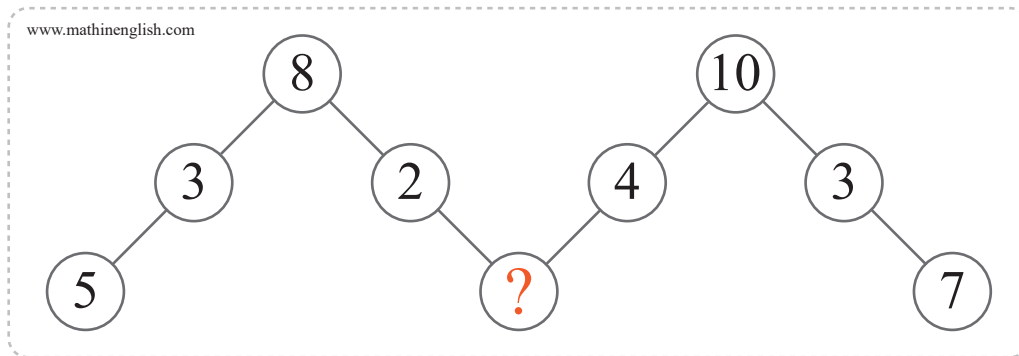
puzzle 1

Given the first 3 clocks, what should the time be on the 4th clock ?



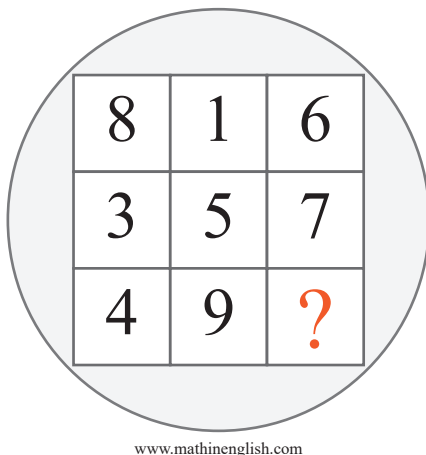
puzzle 2

What is the missing number ?



puzzle 3

Which number is needed to complete the sequence ?



puzzle 4

What is the missing letter ?

B	D	2
W	?	3
C	G	4
A	K	10

Below the table is the text 'www.mathinenglish.com'.

Answer to brain teasers

puzzle 1 : 9 o' clock

Each clock shows a time of 90 minutes later than the one before.

puzzle 2 : 6

6 is the difference between 8 and 2, 10 and 4.

puzzle 3 : 2

All rows and columns add up to 15.

puzzle 4 : Z

W plus 3 is 26, or Z.