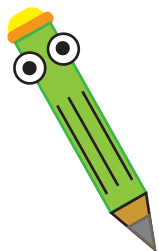


# Doubling Numbers Crossword



1			2		
		3			4
	5			6	
7			8		
		9			10
	11			12	

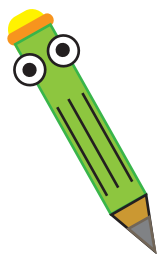
## ACROSS

1.  $6 + 6$
2.  $18 + 18$
3.  $14 + 14$
5.  $21 + 21$
6.  $10 + 10$
7.  $37 + 37$
8.  $27 + 27$
9.  $34 + 34$
11.  $13 + 13$
12.  $29 + 29$

## DOWN

1.  $7 + 7$
2.  $19 + 19$
3.  $11 + 11$
4.  $5 + 5$
5.  $22 + 22$
6.  $12 + 12$
7.  $36 + 36$
8.  $29 + 29$
9.  $33 + 33$
10.  $39 + 39$

# Answers



<sup>1</sup> 1	2		<sup>2</sup> 3	6	
4		<sup>3</sup> 2	4		<sup>4</sup> 1
	<sup>5</sup> 4	2		<sup>6</sup> 2	0
<sup>7</sup> 7	4		<sup>8</sup> 1	8	
2		<sup>9</sup> 6	8		<sup>10</sup> 7
	<sup>11</sup> 1	6		<sup>12</sup> 5	8

## ACROSS

1.  $6 + 6$
2.  $18 + 18$
3.  $14 + 14$
5.  $21 + 21$
6.  $10 + 10$
7.  $37 + 37$
8.  $27 + 27$
9.  $34 + 34$
11.  $13 + 13$
12.  $29 + 29$

## DOWN

1.  $7 + 7$
2.  $19 + 19$
3.  $11 + 11$
4.  $5 + 5$
5.  $22 + 22$
6.  $12 + 12$
7.  $36 + 36$
8.  $29 + 29$
9.  $33 + 33$
10.  $39 + 39$