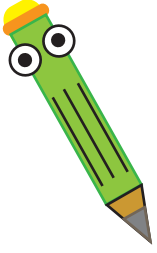


Missing Divisor Crossword



1			2		
		3			4
	5			6	
7			8		
		9			10
	11			12	

ACROSS

1. $9,000 \div \text{ } = 300$

2. $1,400 \div \text{ } = 20$

3. $8,500 \div \text{ } = 340$

5. $2,800 \div \text{ } = 200$

6. $5,550 \div \text{ } = 150$

7. $4,680 \div \text{ } = 180$

8. $5,750 \div \text{ } = 250$

9. $8,260 \div \text{ } = 140$

11. $5,000 \div \text{ } = 125$

12. $2,470 \div \text{ } = 65$

DOWN

1. $7,700 \div \text{ } = 220$

2. $7,500 \div \text{ } = 100$

3. $2,640 \div \text{ } = 110$

4. $5,100 \div \text{ } = 300$

5. $4,000 \div \text{ } = 250$

6. $6,600 \div \text{ } = 200$

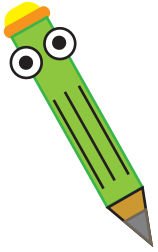
7. $9,800 \div \text{ } = 350$

8. $2,900 \div \text{ } = 100$

9. $6,500 \div \text{ } = 130$

10. $3,240 \div \text{ } = 180$

Answers



¹ 3	0		² 7	0	
5		³ 2	5		⁴ 1
	⁵ 1	4		⁶ 3	7
⁷ 2	6		⁸ 2	3	
8		⁹ 5	9		¹⁰ 1
	¹¹ 4	0		¹² 3	8

ACROSS

1. $9,000 \div \square = 300$

2. $1,400 \div \square = 20$

3. $8,500 \div \square = 340$

5. $2,800 \div \square = 200$

6. $5,550 \div \square = 150$

7. $4,680 \div \square = 180$

8. $5,750 \div \square = 250$

9. $8,260 \div \square = 140$

11. $5,000 \div \square = 125$

12. $2,470 \div \square = 65$

DOWN

1. $7,700 \div \square = 220$

2. $7,500 \div \square = 100$

3. $2,640 \div \square = 110$

4. $5,100 \div \square = 300$

5. $4,000 \div \square = 250$

6. $6,600 \div \square = 200$

7. $9,800 \div \square = 350$

8. $2,900 \div \square = 100$

9. $6,500 \div \square = 130$

10. $3,240 \div \square = 180$