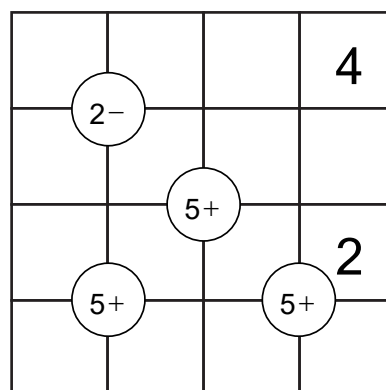
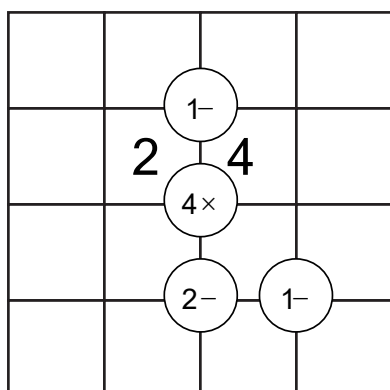
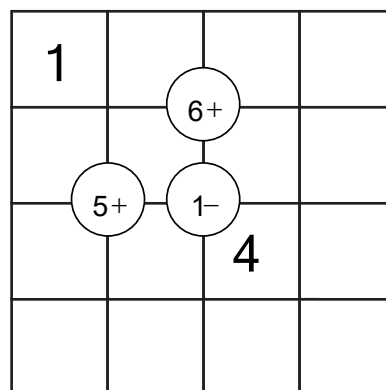
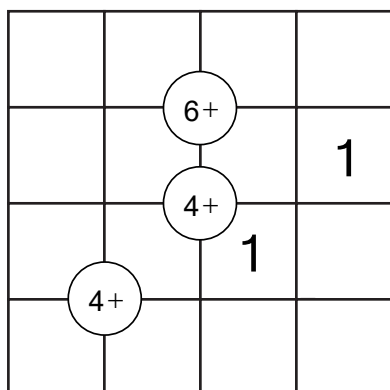
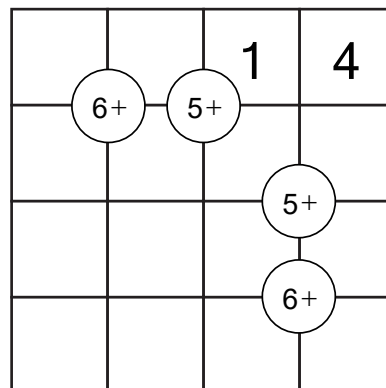
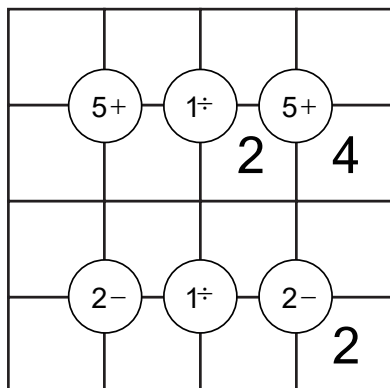


4 by 4 Mathrix Puzzles

Place the number 1 to 4 such that each row and column contains the digits 1 to 4. Circles with conditions are placed on some intersections and are meant for the 2 pairs of diagonally adjacent cells. This can be the sum (+), difference (-), product (\times), quotient (\div), only odd (O) or only even (E).



Answers

Place the number 1 to 4 such that each row and column contains the digits 1 to 4. Circles with conditions are placed on some intersections and are meant for the 2 pairs of diagonally adjacent cells. This can be the sum (+), difference (-), product (\times), quotient (\div), only odd (O) or only even (E).

4	2	1	3
3	1	2	4
2	3	4	1
1	4	3	2

2	3	1	4
3	4	2	1
1	2	4	3
4	1	3	2

1	4	3	2
4	3	2	1
3	2	1	4
2	1	4	3

1	4	3	2
4	3	2	1
2	1	4	3
3	2	1	4

4	3	1	2
1	2	4	3
3	1	2	4
2	4	3	1

3	2	1	4
4	1	2	3
1	3	4	2
2	4	3	1