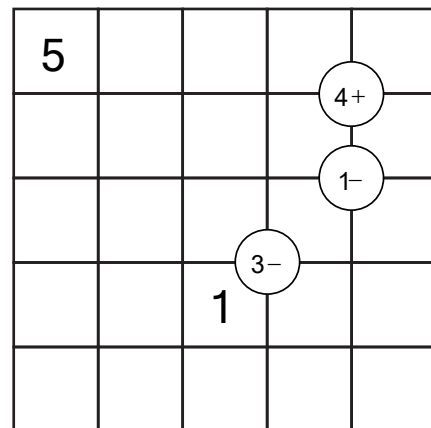
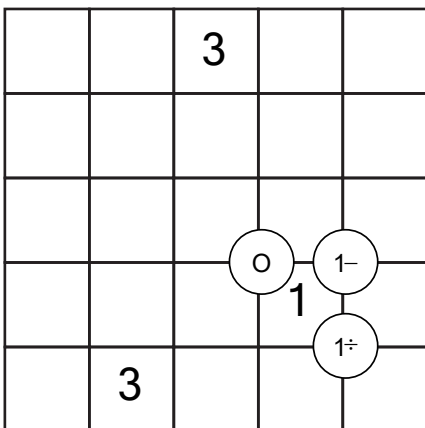
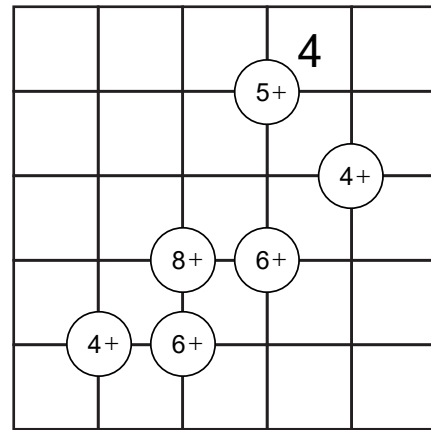
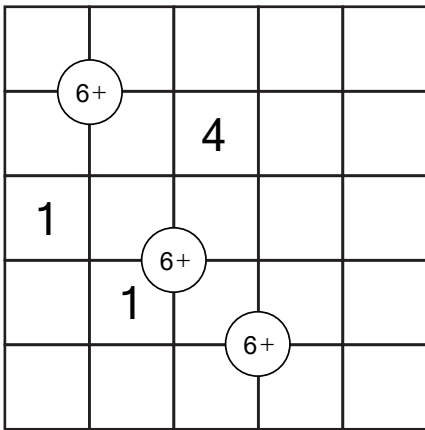


5 by 5 Mathrix Puzzles

Place the number 1 to 5 such that each row and column contains the digits 1 to 5. Circles with conditions are placed on some intersections and are meant for the 2 pairs of diagonally adjacent cells. This can be the sum (+), difference (-), product (\times), quotient (\div), only odd (O) or only even (E).



Answers

Place the number 1 to 5 such that each row and column contains the digits 1 to 5. Circles with conditions are placed on some intersections and are meant for the 2 pairs of diagonally adjacent cells. This can be the sum (+), difference (-), product (\times), quotient (\div), only odd (O) or only even (E).

4	3	1	5	2
3	2	4	1	5
1	4	5	2	3
5	1	2	3	4
2	5	3	4	1

Conditions: $6+$ (row 1, col 2), $6+$ (row 3, col 3), $6+$ (row 4, col 4)

5	1	2	4	3
4	5	1	3	2
3	4	5	2	1
2	3	4	1	5
1	2	3	5	4

Conditions: $5+$ (row 1, col 3), $4+$ (row 2, col 5), $8+$ (row 3, col 3), $6+$ (row 3, col 4), $4+$ (row 4, col 2), $6+$ (row 4, col 3)

1	4	3	2	5
2	1	4	5	3
4	5	1	3	2
3	2	5	1	4
5	3	2	4	1

Conditions: O (row 3, col 3), $1-$ (row 3, col 4), $1\div$ (row 4, col 4)

5	4	3	1	2
4	1	5	2	3
3	5	2	4	1
2	3	1	5	4
1	2	4	3	5

Conditions: $4+$ (row 1, col 4), $1-$ (row 2, col 4), $3-$ (row 3, col 3)