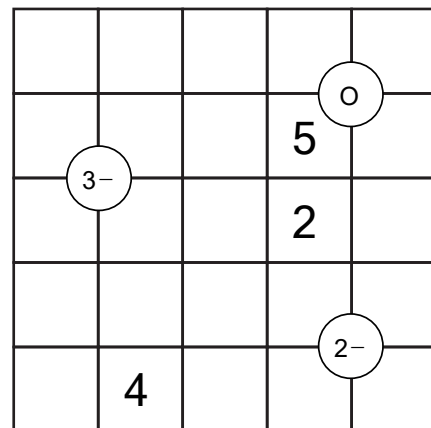
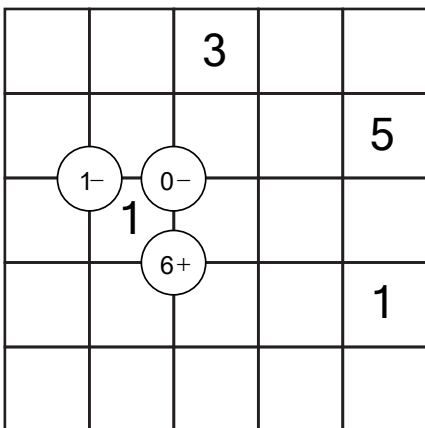
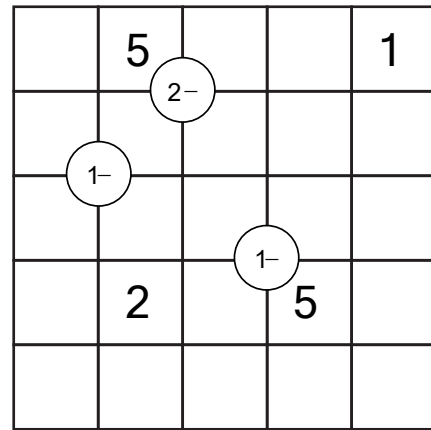
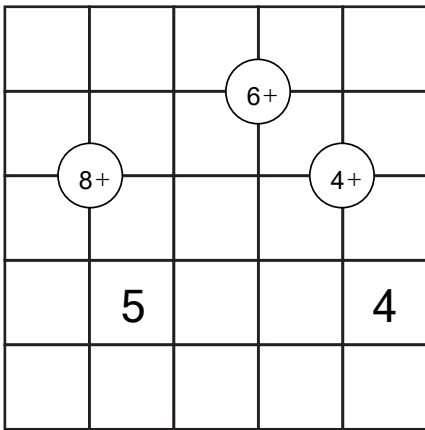


# 5 by 5 Mathrix Puzzles

Place the number 1 to 5 such that each row and column contains the digits 1 to 5. Circles with conditions are placed on some intersections and are meant for the 2 pairs of diagonally adjacent cells. This can be the sum (+), difference (-), product ( $\times$ ), quotient ( $\div$ ), only odd (O) or only even (E).



# Answers

Place the number 1 to 5 such that each row and column contains the digits 1 to 5. Circles with conditions are placed on some intersections and are meant for the 2 pairs of diagonally adjacent cells. This can be the sum (+), difference (-), product ( $\times$ ), quotient ( $\div$ ), only odd (O) or only even (E).

3	2	4	5	1
5	4	1	2	3
4	3	5	1	2
1	5	2	3	4
2	1	3	4	5

4	5	2	3	1
2	4	3	1	5
5	1	4	2	3
3	2	1	5	4
1	3	5	4	2

4	5	3	1	2
2	4	1	3	5
5	1	4	2	3
3	2	5	4	1
1	3	2	5	4

2	3	4	1	5
4	2	1	5	3
5	1	3	2	4
3	5	2	4	1
1	4	5	3	2