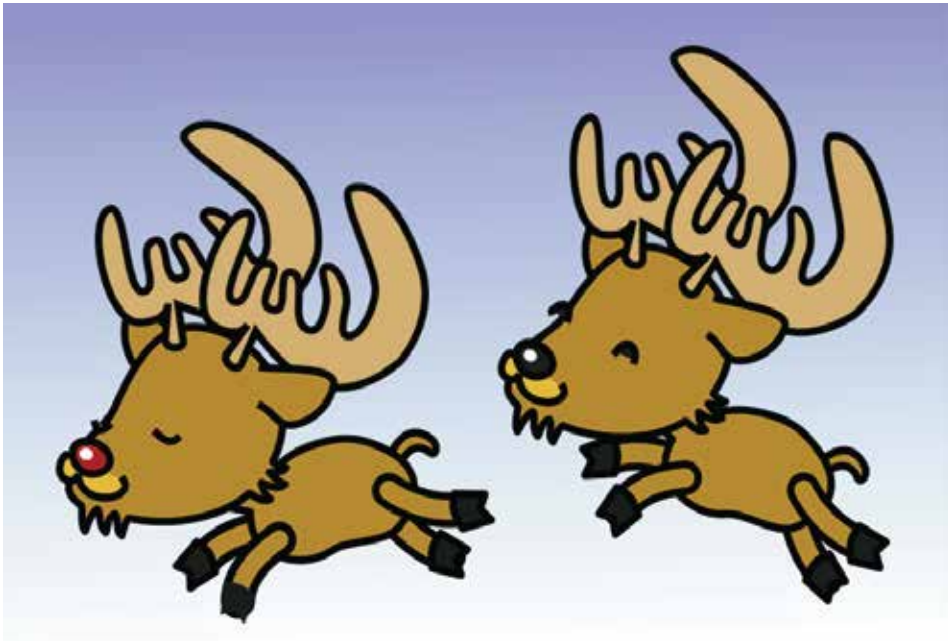


Christmas MathDoku

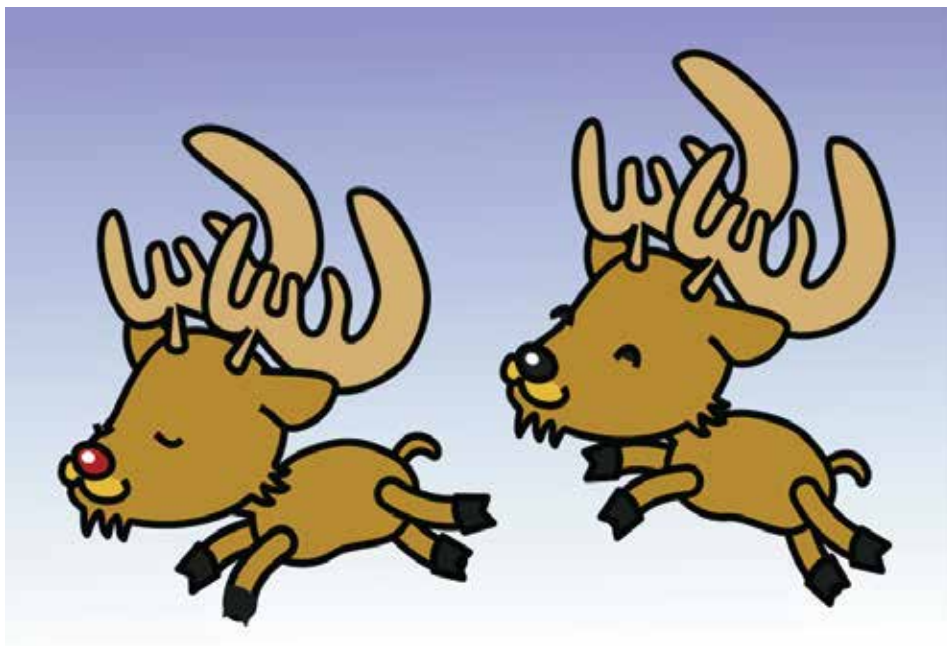
THE RULES OF MATHDOKU ARE SIMILAR TO THOSE OF THE FAMOUS KENKEN PUZZLES. FILL THE GRID WITH THE DIGITS 1 TO 9, WHERE EACH NUMBER MAY ONLY APPEAR ONCE IN A ROW, COLUMN OR OUTLINED BLOCK (CAGE). THE CAGES CONTAIN A PRINTED MATH OPERATOR AND A TARGET NUMBER. USE THE NUMBERS AND THE OPERATORS IN EACH CAGE, SO THAT THE RESULT EQUALS THE TARGET NUMBER.



9×	2÷	12+	2÷		2-		11+	
			10×	16+		63×		48×
5-		13+			19+		18×	
26+	13+		1-					
			6÷	4÷	9+	17+	6×	
	27×						9+	11+
		56×		12+		40×		
2÷		16×		45×	10+		7÷	
14×		9÷					5-	

Answers

THE RULES OF MATHDOKU ARE SIMILAR TO THOSE OF THE FAMOUS KENKEN PUZZLES. FILL THE GRID WITH THE DIGITS 1 TO 9, WHERE EACH NUMBER MAY ONLY APPEAR ONCE IN A ROW, COLUMN OR OUTLINED BLOCK (CAGE). THE CAGES CONTAIN A PRINTED MATH OPERATOR AND A TARGET NUMBER. USE THE NUMBERS AND THE OPERATORS IN EACH CAGE, SO THAT THE RESULT EQUALS THE TARGET NUMBER.



2	4	3	6	9	5	8	1	7
4	7	1	3	6	9	5	2	8
9	1	8	4	5	2	7	6	3
8	5	4	1	2	3	9	7	6
7	2	5	9	3	6	1	8	4
1	3	6	5	8	7	4	9	2
5	8	2	7	1	4	6	3	9
3	6	9	8	7	1	2	4	5
6	9	7	2	4	8	3	5	1